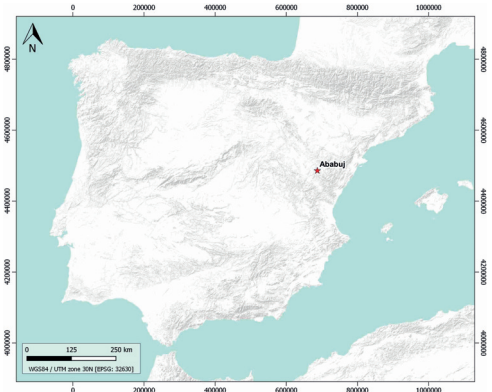


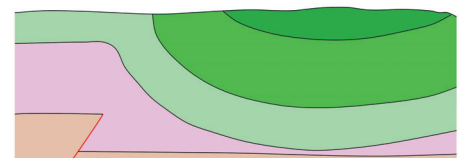
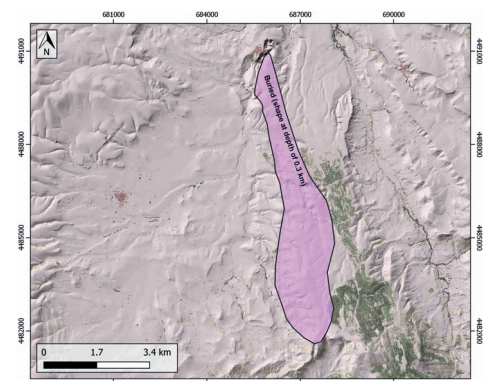
### GENERAL INFORMATION

Structure type	Evaporite-cored anticline
Deformed/Undeformed	Deformed
Geological Setting	Iberian Range, Maestrat Basin
Outcropping/buried	Buried
Evaporite unit/s name	Keuper facies
Evaporite unit/s age	Carnian-Rhaetian (Upper Triassic)
Evaporite unit/s origin	Marine
Classif. (Hudec and Jackson, 2009)	Passive piercement
Classif. (Jackson and Talbot, 1986)	Salt anticline
Other comments	Most active diapiric growth in the Maestrat basin match with eastward drift of the Iberian microplate.

### LOCATION



### SHAPE AND SUB-SURFACE STRUCTURE



### STRATIGRAPHY AND STRUCTURE

Evaporite unit/s composition	Shale-Gypsum-Anhydrite
Syn-kinematic unit/s	Early Jurassic (Cortes de Tajuña and Cuevas Labradas Fm.) ; Late Jurassic (Loriguilla, Higuieruelas and Arzobispo Fms.) ; Hauterivian (El Castellar Fm.) ; Barremian (Camarillas, Artoles, Morella and Xert Fms.) ; Early Aptian (Forcall and Villaroya de los Pinares Fms.) ; Late Aptian (Benassal Fm.) Albian (Escucha and Utrillas Fms.) ; Paleogene-Miocene
Post-evaporite and pre-kinematic unit/s	Late Cretaceous (Mosqueruela, Barranco de los Degollados, La Cañadilla and Fortanete Fms., limestones, dolostones and marlstones)
Post-kinematic unit/s (or post-evaporite deposition when undeformed)	Quaternary (alluvial and colluvial detrital deposits)
Age of evaporite flow or deformation (when deformed)	Lower Cretaceous, Miocene, Upper Cretaceous to Oligocene, Upper Jurassic
Flow or deforming triggering mechanisms	Late Jurassic-Early Cretaceous rift and Alpine inversion of listric normal faults
Halokinetic structures	Thickness variations / progressive unconformities

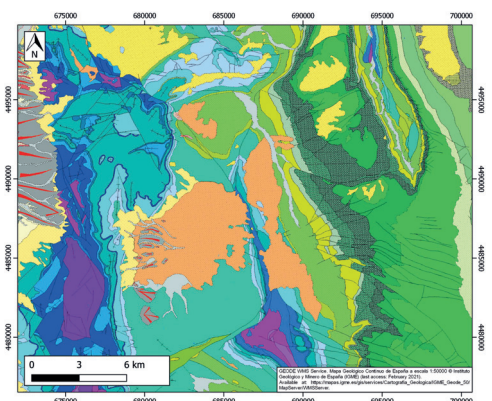
### SUB-SURFACE DATA AVAILABILITY

Available borehole data	No
Available seismic data	Yes

### MAIN REFERENCES

Stratigraphy	Aurell et al. (2016)
Regional Stratigraphy	Vergés et al. (2020)
Structure	Vergés et al. (2020)
Regional Structure	Salas et al. (2001)
Gravimetry	Ayala et al. (2016)
Petrophysics/Paleomagnetism	nd

### GEOLOGY (GEODE IGME)



IBERIAN  
EVAPORITE  
STRUCTURE  
DATABASE