

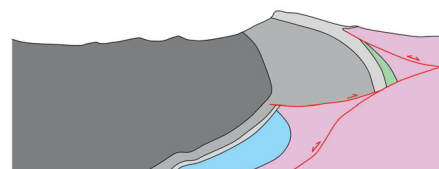
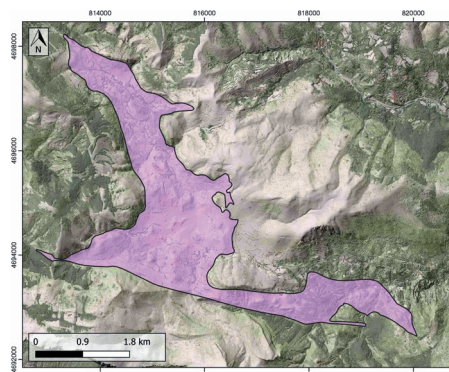
### GENERAL INFORMATION

Structure type	Evaporite Diapir
Deformed/Undeformed	Deformed
Geological Setting	South Pyrenees Central Unit, Nogueres zone
Outcropping/buried	Outcropping
Evaporite unit/s name	El Pont de Suert Fm.
Evaporite unit/s age	Upper Anisian and Carnian-Rhaetian (Middle-Upper Triassic)
Evaporite unit/s origin	Marine
Classif. (Hudec and Jackson, 2009)	Passive piercement
Classif. (Jackson and Talbot, 1986)	Salt roller, welded
Other comments	Also known as "Sant Gervàs" or "Lastarri weld". Post-late Santonian compressional overprinting: weld formation and partial downward salt flow into the source layer. Adons, Aulet and Viu de Llevata diapirs are separated by a sub-vertical weld.

### LOCATION



### SHAPE AND SUB-SURFACE STRUCTURE



### STRATIGRAPHY AND STRUCTURE

Evaporite unit/s composition	Shale-Marlstone-Gypsum-Halite-Anhydrite
Post-evaporite and pre-kinematic unit/s	Lower Jurassic (limestones and dolostones)
Syn-kinematic unit/s	Albian-Cenomanian (grainstones) / Cenomanian (marls and limestones) / Upper Cenomanian (breccias)
Post-kinematic unit/s (or post-evaporite deposition when undeformed)	Cenomanian-Turonian / Turonian-Campanian / Quaternary
Age of evaporite flow or deformation (when deformed)	Middle Cretaceous
Flow or deforming triggering mechanisms	Gravity-driven and main development of the Sant Gervàs depocenter
Halokinetic structures	Normal high-angle faults / thrust faults / joints / thickness variations

### SUB-SURFACE DATA AVAILABILITY

Available borehole data	Yes
Available seismic data	Yes

### MAIN REFERENCES

Stratigraphy	Martín-Chivelet et al. (2019)
Regional Stratigraphy	Saura et al. (2016)
Structure	Dalton (2019)
Regional Structure	Cámara and Flinch (2017)
Gravimetry	Ayala et al. (2016)
Petrophysics/Paleomagnetism	Santolaria et al. (2017)

### GEOLOGY (GEODE IGME)

