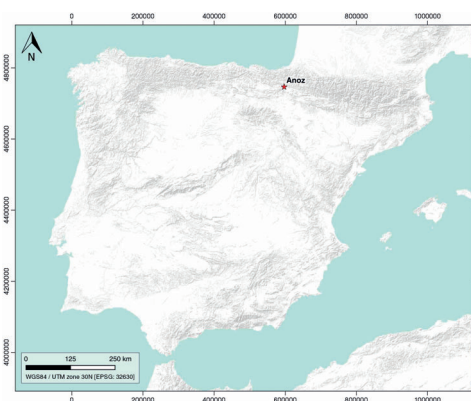


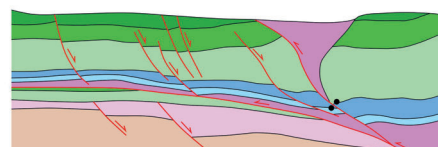
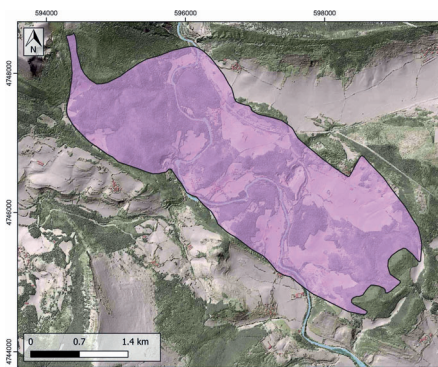
GENERAL INFORMATION

Structure type	Evaporite Diapir
Deformed/Undeformed	Deformed
Geological Setting	Basque-Cantabrian Basin, Navarra-Álava trough
Outcropping/buried	Outcropping
Evaporite unit/s name	Keuper facies
Evaporite unit/s age	Carnian-Rhaetian (Upper Triassic)
Evaporite unit/s origin	Marine
Classif. (Hudec and Jackson, 2009)	Thrust piercement
Classif. (Jackson and Talbot, 1986)	Salt roller
Other comments	Complex sub-surface structure. Alignment of the Salinas del Oro, Anoz, Alloz, Estella, Ollo, Echalecu and Iza along the Pamplona fault.

LOCATION



SHAPE AND SUB-SURFACE STRUCTURE



STRATIGRAPHY AND STRUCTURE

Evaporite unit/s composition	Gypsum-Halite-Anhydrite-Claystone-Ophites
Post-evaporite and pre-kinematic unit/s	Jurassic (dolostones, marls and oolitic limestones)
Syn-kinematic unit/s	Upper Weald facies / Aptian-middle Albian (Urgonian Group; Punta del Bakio Unit) / Danian-Selandian / Thanetian-Ypresian / Lutetian-Bartonian / Priabonian-Burdigalian
Post-kinematic unit/s (or post-evaporite deposition when undeformed)	Quaternary (alluvial and colluvial detrital deposits)
Age of evaporite flow or deformation (when deformed)	Danian to Burdigalian and Lower Cretaceous
Flow or deforming triggering mechanisms	Pamplona fault
Halokinetic structures	Progressive unconformities / radial normal and thrust faults / thickness variations

SUB-SURFACE DATA AVAILABILITY

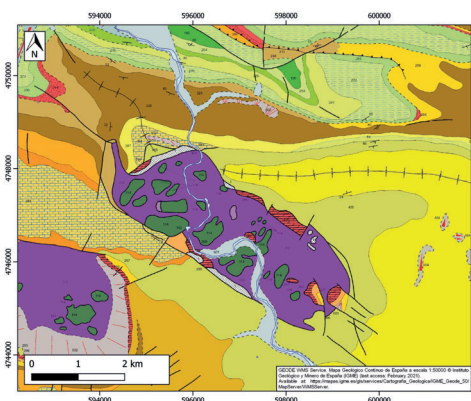
Available borehole data	Yes
Available seismic data	Yes



MAIN REFERENCES

Stratigraphy	Cámara (2020)
Regional Stratigraphy	Pedraza et al. (2017)
Structure	Poprawski and Basile (2018)
Regional Structure	Larrasoña et al. (2003)
Gravimetry	Pinto et al. (2005)
Petrophysics/Paleomagnetism	Llamas et al. (2017)

GEOLOGY (GEODE IGME)



IBERIAN
EVAPORITE
STRUCTURE
DATABASE