

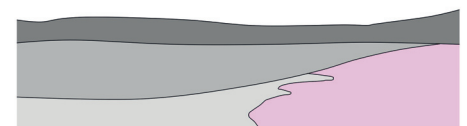
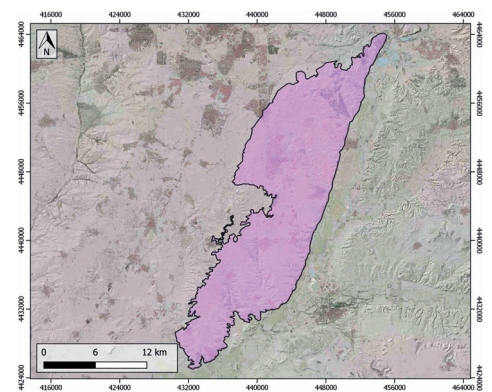
GENERAL INFORMATION

Structure type	Evaporite body
Deformed/Undeformed	Undeformed
Geological Setting	Tagus Basin, Madrid Sub-Basin
Outcropping/buried	Outcropping
Evaporite unit/s name	Unnamed
Evaporite unit/s age	Lower-Middle Miocene
Evaporite unit/s origin	Continental
Classif. (Hudec and Jackson, 2009)	No diapirism
Classif. (Jackson and Talbot, 1986)	No diapirism
Other comments	Decimeter-thick layers of gypsum with centimetric intercalations of claystones and marlstones. Gypsum shows meso- and macro-lenticular fabrics with a bimodal size-distribution of the lenses. Burrowing features and chert nodules are also common.

LOCATION



SHAPE AND SUB-SURFACE STRUCTURE



STRATIGRAPHY AND STRUCTURE

Evaporite unit/s composition	Gypsum-Halite-Anhydrite-Shale-Marlstone
Post-evaporite and pre-kinematic unit/s	
Syn-kinematic unit/s	-
Post-kinematic unit/s (or post-evaporite deposition when undeformed)	Middle-Upper Miocene ; Upper Miocene ; Upper Miocene ; Upper Pliocene ; Quaternary
Age of evaporite flow or deformation (when deformed)	Undeformed
Flow or deforming triggering mechanisms	-
Halokinetic structures	-

SUB-SURFACE DATA AVAILABILITY

Available borehole data	Yes
Available seismic data	Yes

MAIN REFERENCES

Stratigraphy	Cañaveras et al. (2020)
Regional Stratigraphy	Calvo et al. (1989)
Structure	De Vicente and Muñoz-Martín (2013)
Regional Structure	De Vicente et al. (1995)
Gravimetry	Olaiz et al. (2015)
Petrophysics/Paleomagnetism	nd

GEOLOGY (GEODE IGME)

