

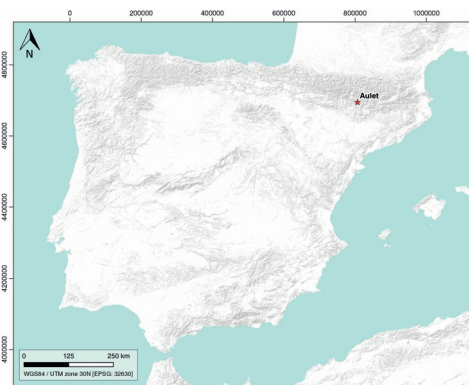
Aulet

ID #019

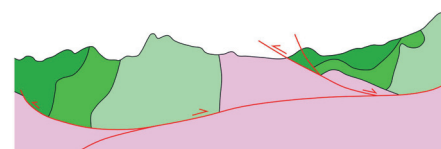
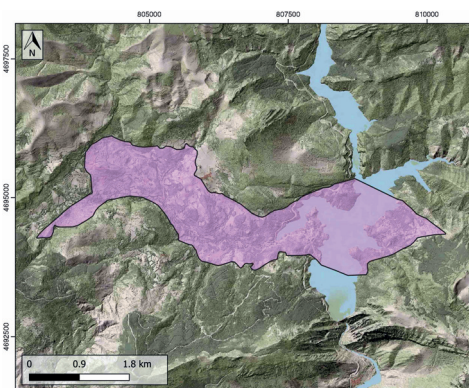
GENERAL INFORMATION

Structure type	Evaporite Diapir
Deformed/Undeformed	Deformed
Geological Setting	Southern Pyrenees
Outcropping/buried	Outcropping
Evaporite unit/s name	El Pont de Suert Fm.
Evaporite unit/s age	Carnian-Rhaetian (Upper Triassic)
Evaporite unit/s origin	Marine
Classif. (Hudec and Jackson, 2009)	Passive piercement
Classif. (Jackson and Talbot, 1986)	Salt roller, welded
Other comments	Post-late Santonian compressional overprinting: weld formation and partial downward salt flow into the source layer. Adons (ID #044) and Aulet diapirs are separated by a sub-vertical weld.

LOCATION



SHAPE AND SUB-SURFACE STRUCTURE



STRATIGRAPHY AND STRUCTURE

Evaporite unit/s composition	Shale-Marlstone-Gypsum-Halite-Anhydrite
Post-evaporite and pre-kinematic unit/s	-
Syn-kinematic unit/s	Lower Cretaceous (limestones) / Albian-Cenomanian (grainstones) / Cenomanian (marls and limestones) / Cenomanian-Turonian (brecchias) / Turonian (limestones) / Coniacian-Santonian (brecchias)
Post-kinematic unit/s (or post-evaporite deposition when undeformed)	
Age of evaporite flow or deformation (when deformed)	Upper Jurassic – Early Albian (early stage) and Albian – Santonian (late stage)
Flow or deforming triggering mechanisms	Gravity-driven extension and development of the Sopeira depocenter
Halokinetic structures	Progressive unconformities / Normal faults

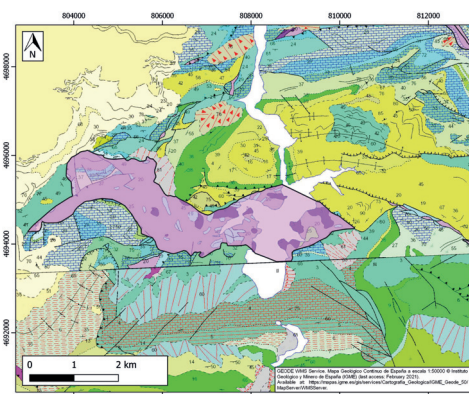
SUB-SURFACE DATA AVAILABILITY

Available borehole data	No
Available seismic data	Yes

MAIN REFERENCES

Stratigraphy	Dalton (2019) [Ph.D. thesis]
Regional Stratigraphy	Saura et al. (2016)
Structure	Saura et al. (2016)
Regional Structure	Muñoz et al. (2018)
Gravimetry	Ayala et al. (2016)
Petrophysics/Paleomagnetism	Santolaria et al. (2017)

GEOLOGY (GEODE IGME)



IBERIAN
EVAPORITE
STRUCTURE
DATABASE