

Badlatosa-Benamejí

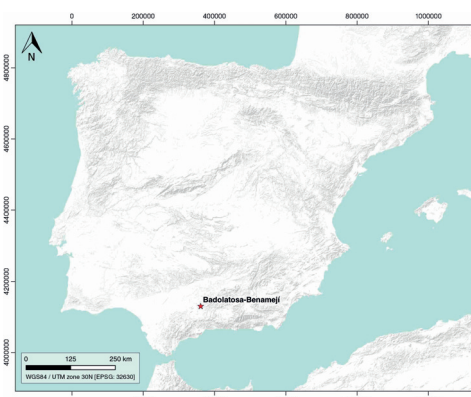
ID #104

SUMARIZED INDEX CARD
Downloaded from Iberian Evaporite Structure DataBase

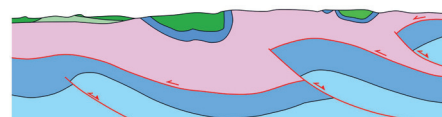
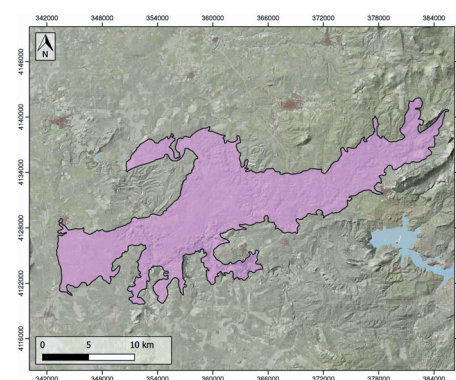
GENERAL INFORMATION

Structure type	Allochthonous evaporite body
Deformed/Undeformed	Deformed
Geological Setting	Betic system, Sub-Betic cordillera
Outcropping/buried	Outcropping
Evaporite unit/s name	Carcelén Anhydrite, Keuper facies
Evaporite unit/s age	Hettangian (Lower Jurassic), Carnian-Rhaetian (Upper Triassic)
Evaporite unit/s origin	Marine
Classif. (Hudec and Jackson, 2009)	Passive piercement
Classif. (Jackson and Talbot, 1986)	Detached diapir, Welded
Other comments	Complex tectonic evolution: (1) extensional regime, diapirs pierce the overlying sediments and the salt spreads parallel to the strata forming tongues, (2) compression, tongues are disconnected and form allochthonous sheets, (3) allochthonous sheets flow and give rise to the actual structure.

LOCATION



SHAPE AND SUB-SURFACE STRUCTURE



STRATIGRAPHY AND STRUCTURE

Evaporite unit/s composition	Shale-Gypsum-Sandstone-Halite-Anhydrite
Post-evaporite and pre-kinematic unit/s	Lower Jurassic (dolostones, limestones, micritic limestones, oolitic limestones and breccias) ; Middle-Upper Jurassic (limestones, marlstones, marly limestones, oolitic limestones) ; Lower Cretaceous (marlstones and marly limestones)
Syn-kinematic unit/s	Upper Cretaceous (white marly limestones, limestones, marlstones) ; Oligocene (calcareites and limestones)
Post-kinematic unit/s (or post-evaporite deposition when undeformed)	Pliocene (siltstones, sandstones, conglomerates) ; Quaternary
Age of evaporite flow or deformation (when deformed)	Miocene, Oligocene to Miocene, Upper Cretaceous
Flow or deforming triggering mechanisms	Margin extension, Alpine compression and Piggyback development
Halokinetic structures	Progressive unconformities / overturned flanks / roll-over anticlines / mini-basins

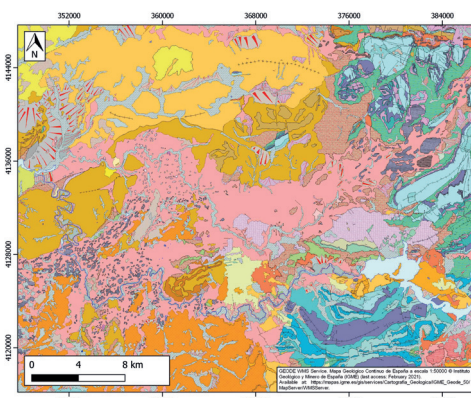
SUB-SURFACE DATA AVAILABILITY

Available borehole data	Yes
Available seismic data	Yes

MAIN REFERENCES

Stratigraphy	Daudet et al. (2020)
Regional Stratigraphy	Flinch and Soto (2017)
Structure	García et al. (2016)
Regional Structure	Flinch and Soto (2017)
Gravimetry	Ayala et al. (2016)
Petrophysics/Paleomagnetism	nd

GEOLOGY (GEODE IGME)



IBERIAN
EVAPORITE
STRUCTURE
DATABASE