

Benamaurel

ID #105

SUMARIZED INDEX CARD

Downloaded from Iberian Evaporite Structure DataBase

GENERAL INFORMATION

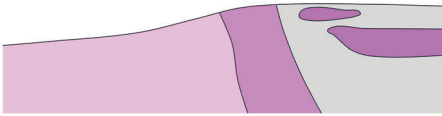
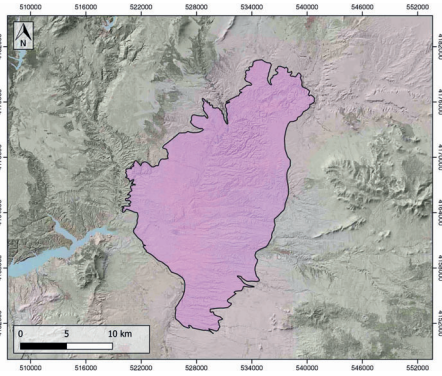
Structure type	Evaporite body
Deformed/Undeformed	Undeformed
Geological Setting	Betic system, Guadix-Baza Basin
Outcropping/buried	Outcropping
Evaporite unit/s name	Benamaurel, Galera and Torre del Salar Gypsum Units
Evaporite unit/s age	Pliocene-Pleistocene (Upper Neogene-Quaternary)
Evaporite unit/s origin	Continental
Classif. (Hudec and Jackson, 2009)	No diapirism
Classif. (Jackson and Talbot, 1986)	No diapirism
Other comments	Isotopic composition (δ34S, δ18O) of gypsum consistent with a Triassic origin of the sulphate (chemical recycling).

LOCATION



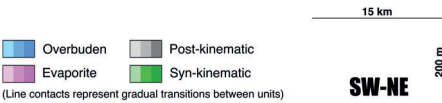
SHAPE AND SUB-SURFACE STRUCTURE

Evaporite unit/s composition	Gypsum-Limestone-Shale-Gravel
Post-evaporite and pre-kinematic unit/s	-
Syn-kinematic unit/s	-
Post-kinematic unit/s (or post-evaporite deposition when undeformed)	Plio-Pleistocene (Baza Fm., calcareous Mb)
Age of evaporite flow or deformation (when deformed)	Undeformed
Flow or deforming triggering mechanisms	-
Halokinetic structures	-



SUB-SURFACE DATA AVAILABILITY

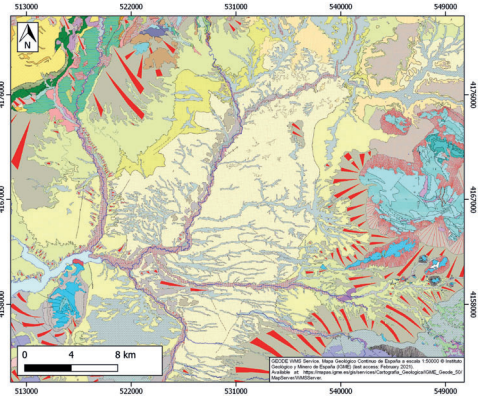
Available borehole data	Yes
Available seismic data	Yes



MAIN REFERENCES

Stratigraphy	Gibert et al. (2007)
Regional Stratigraphy	Aguilar et al. (2013)
Structure	Haberland et al. (2017)
Regional Structure	Alfaro et al. (2008)
Gravimetry	Ayala et al. (2016)
Petrophysics/Paleomagnetism	nd

GEOLOGY (GEODE IGME)



IBERIAN
EVAPORITE
STRUCTURE
DATABASE