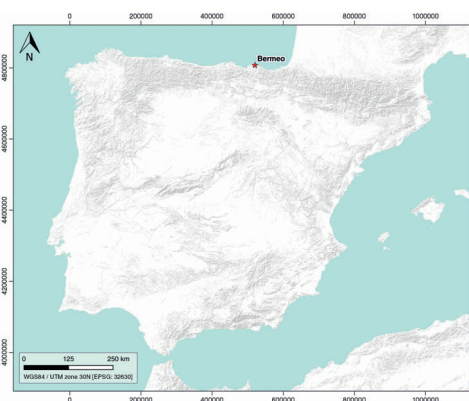


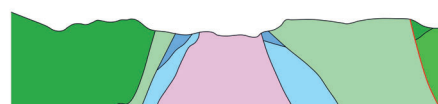
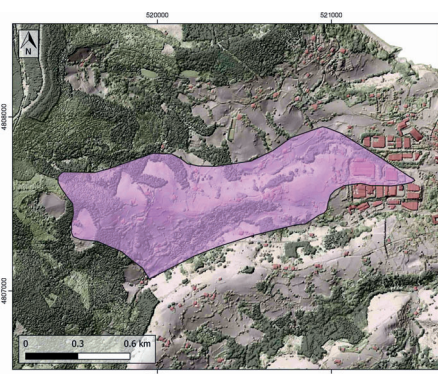
GENERAL INFORMATION

Structure type	Evaporite Diapir
Deformed/Undeformed	Deformed
Geological Setting	Basque-Cantabrian Basin, Basque Arc
Outcropping/buried	Outcropping
Evaporite unit/s name	Keuper facies
Evaporite unit/s age	Carnian-Rhaetian (Upper Triassic)
Evaporite unit/s origin	Marine
Classif. (Hudec and Jackson, 2009)	Passive piercement
Classif. (Jackson and Talbot, 1986)	Salt wall
Other comments	Salt wall partially welded during Alpine compression, but the structure of syn-diapiric formation is well-preserved.

LOCATION



SHAPE AND SUB-SURFACE STRUCTURE



STRATIGRAPHY AND STRUCTURE

Evaporite unit/s composition	Claystone-Marlstone-Halite-Anhydrite
Post-evaporite and pre-kinematic unit/s	Jurassic (dolostones, marls and oolitic limestones) and Neocomian (limestones, marlstones and sandstones)
Syn-kinematic unit/s	Aptian-middle Albian (Urgonian Group; Punta del Bakio Unit) / Upper Albian-lower Cenomanian (Deva Fm.; Cabo Villano Fm.; Plenzia Fm.)
Post-kinematic unit/s (or post-evaporite desposition when undeformed)	Quaternary (alluvial and colluvial detrital deposits)
Age of evaporite flow or deformation (when deformed)	Lower Cretaceous
Flow or deforming triggering mechanisms	Under discussion
Halokinetic structures	Progressive unconformities / Normal high-angle faults / joints / thickness variations

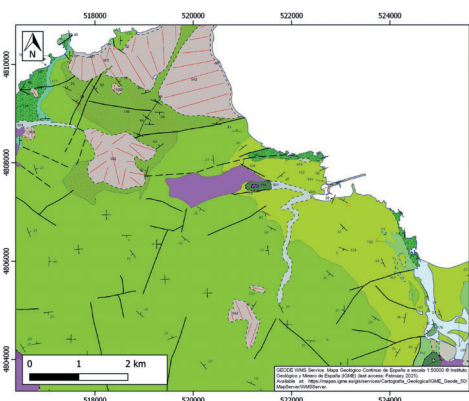
SUB-SURFACE DATA AVAILABILITY

Available borehole data	No
Available seismic data	Yes

MAIN REFERENCES

Stratigraphy	García-Modéjar and Robador (1987)
Regional Stratigraphy	Beamud et al. (2016)
Structure	Cámara (2017)
Regional Structure	Poprawski and Basile (2018)
Gravimetry	Nettleton (1968)
Petrophysics/Paleomagnetics	Soto et al. (2017)

GEOLOGY (GEODE IGME)



IBERIAN
EVAPORITE
STRUCTURE
DATABASE