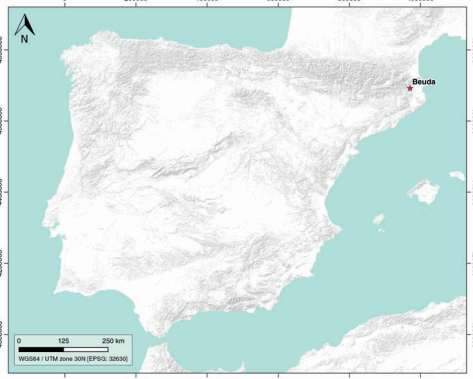


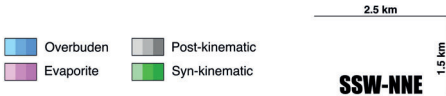
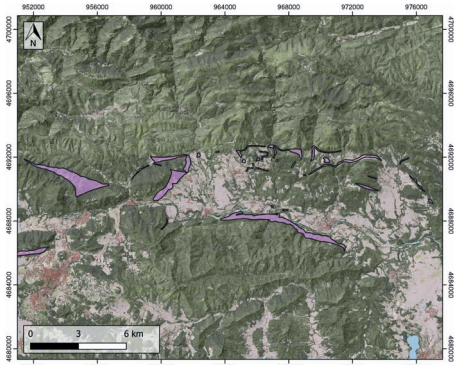
GENERAL INFORMATION

Structure type	Evaporite body
Deformed/Undeformed	Deformed
Geological Setting	Southern Pyrenees, Cadí thrust sheet
Outcropping/buried	Outcropping
Evaporite unit/s name	Beuda Fm., Vallfogona Fm. and Serrat Evaporites Units
Evaporite unit/s age	Late Cuisian-Lutetian (Eocene)
Evaporite unit/s origin	Marine
Classif. (Hudec and Jackson, 2009)	Ductile piercement, Thrust piercement
Classif. (Jackson and Talbot, 1986)	nd
Other comments	Upper part of the Beuda evaporites acted as a decollement during middle-late Eocene thrusting in the southern Pyrenees. Thick series of evaporitic rocks beneath the Ripoll Syncline (2000 m in the El Serrat-1 Well) interpreted as a stratigraphic unit passing laterally to turbidites and shallow water carbonates

LOCATION



SHAPE AND SUB-SURFACE STRUCTURE



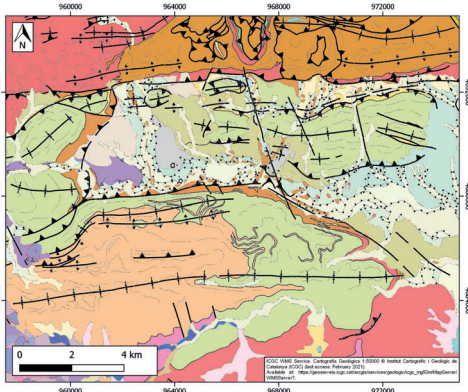
STRATIGRAPHY AND STRUCTURE

Evaporite unit/s composition	Shale-Anhydrite-Gypsum
Post-evaporite and pre-kinematic unit/s	-
Syn-kinematic unit/s	Middle-Upper Lutetian (Banyoles Fm., marlstones and shales) ; Upper Lutetian (Coubet Fm., sandstones and shales) ; Upper Lutetian (Bellumnt Fm., conglomerates and sandstones)
Post-kinematic unit/s (or post-evaporite desposition when undeformed)	Neogene (Empordà Graben fill) ; Pleistocene (siltstones and sandstones) ; Quaternary
Age of evaporite flow or deformation (when deformed)	Eocene
Flow or deforming triggering mechanisms	Southwards-propagating thrusts (Vallfogona thrust, Middle-Late Eocene compression)
Halokinetic structures	Triangle zone development / thrust faults / progressive unconformities

SUB-SURFACE DATA AVAILABILITY

Available borehole data	Yes
Available seismic data	Yes

GEOLOGY (GEODE IGME)



MAIN REFERENCES

Stratigraphy	Carrillo et al. (2014)
Regional Stratigraphy	Vergés et al. (2002)
Structure	Carrillo et al. (2017)
Regional Structure	Burbank et al. (1992)
Gravimetry	Martínez et al. (1997)
Petrophysics/Paleomagnetism	Burbank et al. (1992)



IBERIAN  
EVAPORITE  
STRUCTURE  
DATABASE