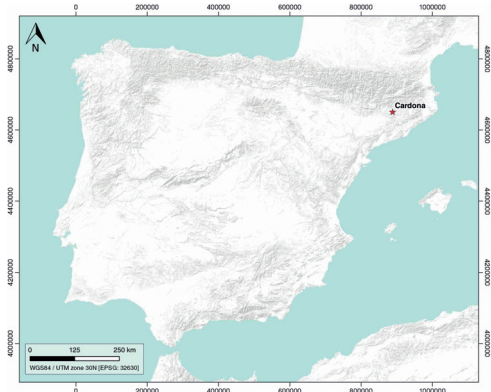


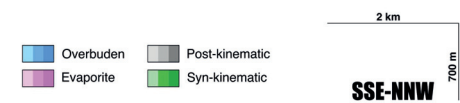
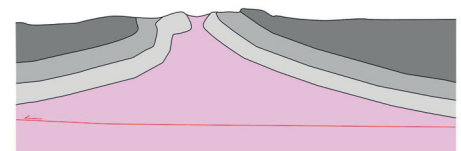
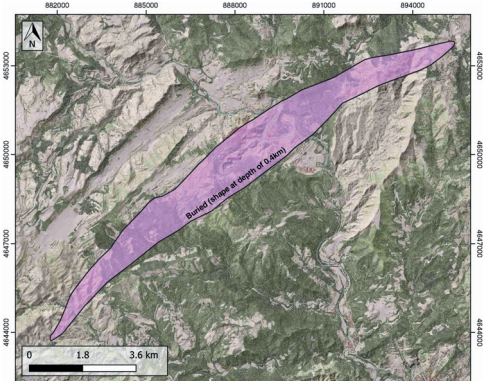
GENERAL INFORMATION

Structure type	Evaporite Diapir
Deformed/Undeformed	Deformed
Geological Setting	Ebro foreland basin
Outcropping/buried	Partially buried
Evaporite unit/s name	Cardona Fm.
Evaporite unit/s age	Priabonian (Eocene)
Evaporite unit/s origin	Marine
Classif. (Hudec and Jackson, 2009)	Ductile piercement
Classif. (Jackson and Talbot, 1986)	Salt stock
Other comments	Unprecise growth age of the Cardona, Suria and El Guix anticlines because of the absence of related syntectonic sediments.

LOCATION



SHAPE AND SUB-SURFACE STRUCTURE



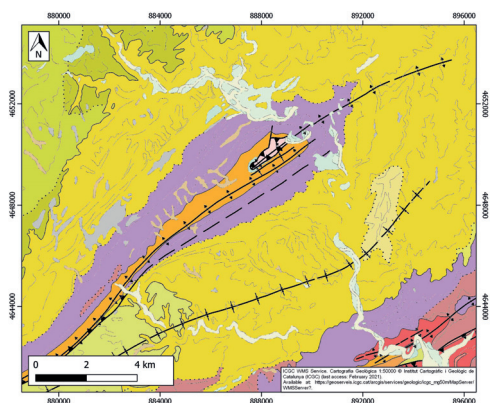
STRATIGRAPHY AND STRUCTURE

Evaporite unit/s composition	Anhydrite - Halite - Sylvite - Carnallite
Post-evaporite and pre-kinematic unit/s	Oligocene (Barbastro and Súrria Fms., marlstones, sandstones and shales); Oligocene (Castelltallat Fm., limestones, marly limestones, marlstones); Upper Oligocene (Solsona Fm., sandstones, red clays, microconglomerates).
Syn-kinematic unit/s	-
Post-kinematic unit/s (or post-evaporite desposition when undeformed)	Priabonian (Súrria Fm.); Rupelian-Chattian (Solsona Fm) +
Age of evaporite flow or deformation (when deformed)	Lower Oligocene
Flow or deforming triggering mechanisms	Moderate folding of the overlying units / Post-shortening erosion
Halokinetic structures	Cardona fault / Cardener fault / Cardona anticline / Intermediate syncline

SUB-SURFACE DATA AVAILABILITY

Available borehole data	Yes (Private access)
Available seismic data	Yes

GEOLOGY (GEODE IGME)



MAIN REFERENCES

Stratigraphy	Sáez (1987) [Ph.D. thesis]
Regional Stratigraphy	Del Santo et al. (2000)
Structure	Vergés et al. (1992)
Regional Structure	Sans et al. (1996)
Gravimetry	Casas et al. (2002)
Petrophysics/Paleomagnetism	Miralles et al. (2000)

