

Carrascosa-Montalbo

ID #137

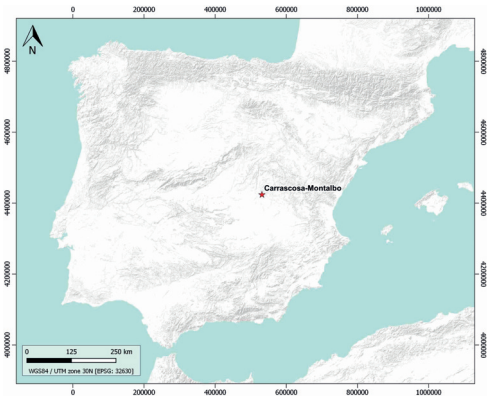
SUMARIZED INDEX CARD

Downloaded from Iberian Evaporite Structure DataBase

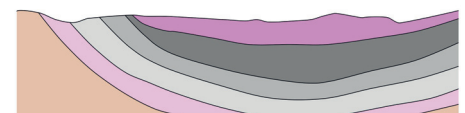
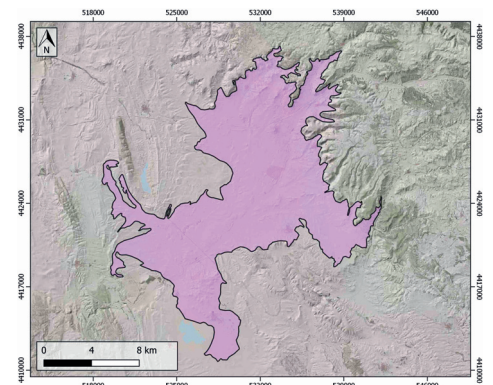
GENERAL INFORMATION

Structure type	Evaporite body
Deformed/Undeformed	Slightly deformed
Geological Setting	Tagus Basin, Loranca Sub-Basin
Outcropping/buried	Outcropping
Evaporite unit/s name	Unnamed
Evaporite unit/s age	Late Tortonian-Early Messinian (Upper Miocene)
Evaporite unit/s origin	Continental
Classif. (Hudec and Jackson, 2009)	No diapirism
Classif. (Jackson and Talbot, 1986)	No diapirism
Other comments	Stratigraphic successions of Early Miocene age (Tórtola, Villalba de la Sierra and Valdeganga depositional systems) include interbedded deposits of playa-lake and meandering river environments.

LOCATION



SHAPE AND SUB-SURFACE STRUCTURE



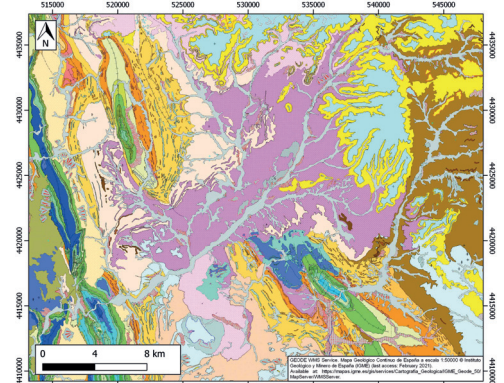
STRATIGRAPHY AND STRUCTURE

Evaporite unit/s composition	Gypsum-Sandstone-Claystone
Post-evaporite and pre-kinematic unit/s	-
Syn-kinematic unit/s	Evaporitic rocks
Post-kinematic unit/s (or post-evaporite deposition when undeformed)	Quaternary (alluvial and colluvial detrital deposits)
Age of evaporite flow or deformation (when deformed)	Miocene
Flow or deforming triggering mechanisms	Alpine compression, Altomira range development
Halokinetic structures	Syncline-Anticline folding / thrust faults

SUB-SURFACE DATA AVAILABILITY

Available borehole data	Yes
Available seismic data	Yes

GEOLOGY (GEODE IGME)



MAIN REFERENCES

Stratigraphy	Díaz-Molina and Muñoz-García (2010)
Regional Stratigraphy	Civis et al. (2004)
Structure	Valcárcel et al. (2016)
Regional Structure	Munoz-Martin et al. (1998)
Gravimetry	Ayala et al. (2016)
Petrophysics/Paleomagnetism	Valcárcel et al. (2016)



IBERIAN
EVAPORITE
STRUCTURE
DATABASE