

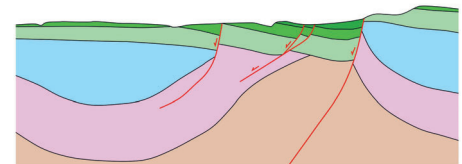
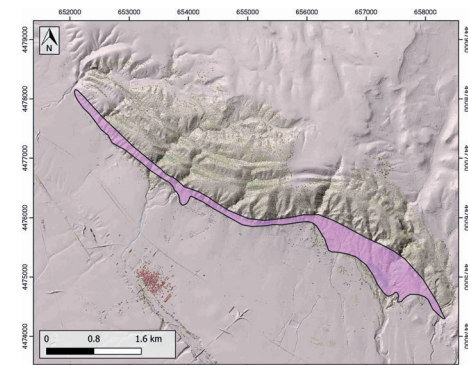
GENERAL INFORMATION

Structure type	Evaporite-detached thrust
Deformed/Undeformed	Deformed
Geological Setting	Iberian Range, Teruel-Jiloca Graben
Outcropping/buried	Outcropping
Evaporite unit/s name	Keuper facies
Evaporite unit/s age	Carnian-Rhaetian (Middle-Upper Triassic)
Evaporite unit/s origin	Marine
Classif. (Hudec and Jackson, 2009)	Thrust piercement
Classif. (Jackson and Talbot, 1986)	Salt wall
Other comments	Recent paleoseismological studies of Quaternary (alluvial and colluvial detrital deposits) affected by the Concud Fault have recognized eleven events between ca. 74 ka BP and the present day (see Ezquerro et al., 2016).

LOCATION



SHAPE AND SUB-SURFACE STRUCTURE



STRATIGRAPHY AND STRUCTURE

Evaporite unit/s composition	Shale-Gypsum-Anhydrite-Ophites
Post-evaporite and pre-kinematic unit/s	Jurassic (limestones, dolostones, marlstones, bioclastic limestones, marly limestones)
Syn-kinematic unit/s	Miocene (shales, claystones, conglomerates, breccias); Pliocene (conglomerates, alluvial deposits); Pleistocene-Holocene (alluvial and colluvial deposits)
Post-kinematic unit/s (or post-evaporite deposition when undeformed)	Quaternary (alluvial and colluvial detrital deposits)
Age of evaporite flow or deformation (when deformed)	Miocene to Pliocene, Quaternary / Active (?)
Flow or deforming triggering mechanisms	Active extensional system in the Iberian range
Halokinetic structures	Low-angle unconformities / joints

SUB-SURFACE DATA AVAILABILITY

Available borehole data	Yes
Available seismic data	Yes

MAIN REFERENCES

Stratigraphy	Ezquerro et al. (2016)
Regional Stratigraphy	Ezquerro et al. (2012)
Structure	Ezquerro et al. (2020)
Regional Structure	Liesa et al. (2019)
Gravimetry	Ayala et al. (2016)
Petrophysics/Paleomagnetism	Ezquerro et al. (2016)

GEOLOGY (GEODE IGME)

