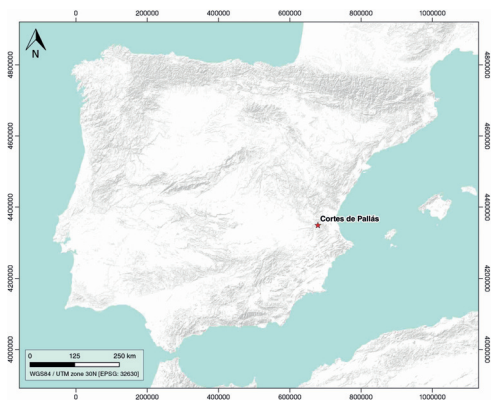


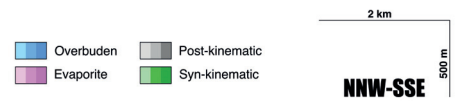
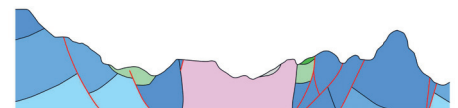
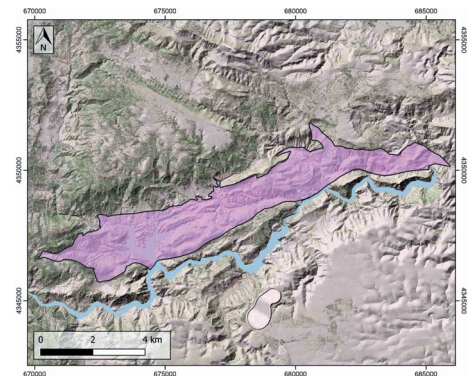
## GENERAL INFORMATION

Structure type	Evaporite Diapir
Deformed/Undeformed	Deformed
Geological Setting	Betic system, Pre-Betic cordillera
Outcropping/buried	Outcropping
Evaporite unit/s name	Jarafuel, Manuel, Cofrentes, Quesa, Ayora and Imón Fms.
Evaporite unit/s age	Carnian-Rhaetian (Upper Triassic)
Evaporite unit/s origin	Marine
Classif. (Hudec and Jackson, 2009)	Passive piercement
Classif. (Jackson and Talbot, 1986)	Salt wall
Other comments	Also known as "Dos Aguas" or "Gabriel-Júcar".

## LOCATION



## SHAPE AND SUB-SURFACE STRUCTURE



## STRATIGRAPHY AND STRUCTURE

Evaporite unit/s composition	Gypsum-Mudstone-Dolostone-Sandstone
Post-evaporite and pre-kinematic unit/s	Kimmeridgian (Loriguilla Fm.) ; Barremian-Middle Cenomanian (Caroig, Sácaras, Alpuente and Chera Fms.) ; Middle Cenomanian-Coniacian (Alatoz, Villa de Ves, Casas de Medina, Ciudad Encantada and Alarcón Fms.) ; Santonian – Maastrichtian (Utiel and Sierra Perenxisa Fms.)
Syn-kinematic unit/s	Oligocene – Lower/Middle Miocene (Conglomerates, breccias, sandstones, sands and silts, limestones and marls) / Tortonian – Pliocene (lutites, sands, sandstones and conglomerates)
Post-kinematic unit/s (or post-evaporite deposition when undeformed)	Quaternary (alluvial and colluvial detrital deposits)
Age of evaporite flow or deformation (when deformed)	Miocene to Pliocene, Oligocene to Miocene
Flow or deforming triggering mechanisms	Prebetic rifting (early stage), intra-Miocene contraction and Tortonian–Pliocene extension (reactivation stage)
Halokinetic structures	Normal high-angle faults / thrust faults / thickness variations

## SUB-SURFACE DATA AVAILABILITY

Available borehole data	No
Available seismic data	No

## MAIN REFERENCES

Stratigraphy	Pérez-López et al. (1996)
Regional Stratigraphy	Navarro-Carrasco and Meléndez-Hevia (2020)
Structure	Santisteban et al. (1990)
Regional Structure	del Olmo et al. (2015)
Gravimetry	Rubinat-Cabanas (2012)
Petrophysics/Paleomagnetism	Roca et al. (2013)

## GEOLOGY (GEODE IGME)

