

Cuevas de Velasco

ID #147

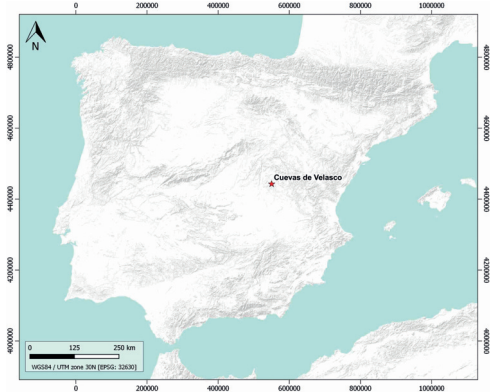
SUMARIZED INDEX CARD

Downloaded from Iberian Evaporite Structure DataBase

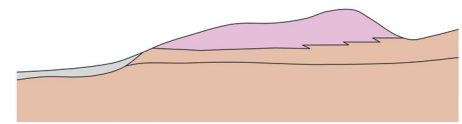
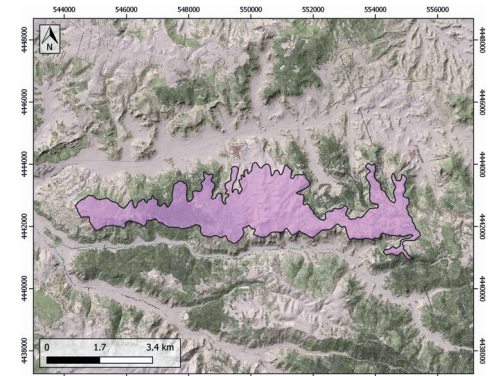
GENERAL INFORMATION

Structure type	Evaporite body
Deformed/Undeformed	Undeformed
Geological Setting	Tagus Basin, Loranca Sub-Basin
Outcropping/buried	Outcropping
Evaporite unit/s name	Unnamed
Evaporite unit/s age	Aragonian-Vallesian (Middle-Late Miocene)
Evaporite unit/s origin	Continental
Classif. (Hudec and Jackson, 2009)	No diapirism
Classif. (Jackson and Talbot, 1986)	No diapirism
Other comments	Stratigraphic successions of Early Miocene age (Tórtola, Villalba de la Sierra and Valdeganga depositional systems) include interbedded deposits of playa-lake and meandering river environments. Middle-Late Miocene evaporites originated in the late functional stage of the Villalba de la Sierra fluvial fan.

LOCATION



SHAPE AND SUB-SURFACE STRUCTURE



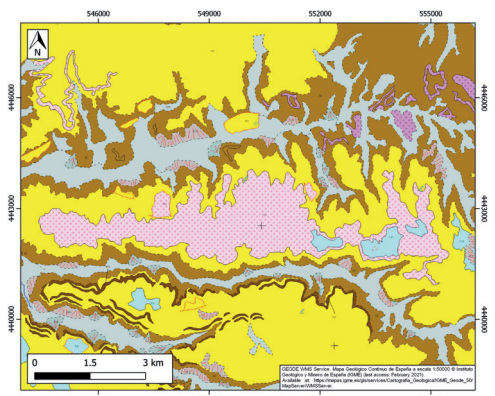
STRATIGRAPHY AND STRUCTURE

Evaporite unit/s composition	Gypsum-Marlstone-Limestone-Claystonestone
Syn-kinematic unit/s	-
Post-evaporite and pre-kinematic unit/s	-
Post-kinematic unit/s (or post-evaporite deposition when undeformed)	Upper Miocene (Vallesian, limestones, marlstones, claystones) ; Pliocene ; Quaternary
Age of evaporite flow or deformation (when deformed)	Undeformed
Flow or deforming triggering mechanisms	-
Halokinetic structures	-

SUB-SURFACE DATA AVAILABILITY

Available borehole data	No
Available seismic data	Yes

GEOLOGY (GEODE IGME)



MAIN REFERENCES

Stratigraphy	Arribas-Mocoroa et al. (1996)
Regional Stratigraphy	Civis et al. (2004)
Structure	Valcárcel et al. (2016)
Regional Structure	Giner-Robles et al. (2012)
Gravimetry	Ayala et al. (2016)
Petrophysics/Paleomagnetism	Valcárcel et al. (2016)



IBERIAN
EVAPORITE
STRUCTURE
DATABASE