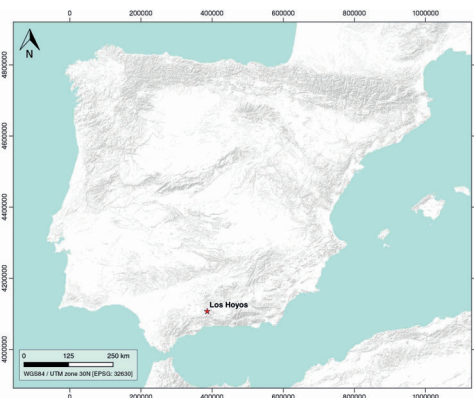


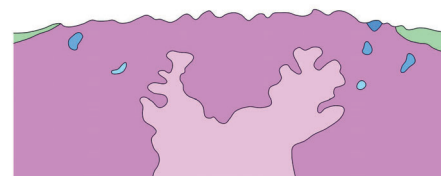
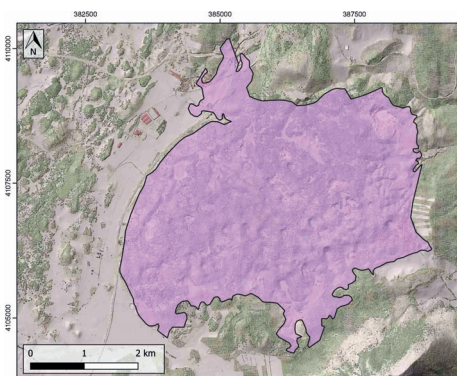
GENERAL INFORMATION

Structure type	Evaporite Diapir
Deformed/Undeformed	Deformed
Geological Setting	Betic system, Pre-Betic Cordillera
Outcropping/buried	Outcropping
Evaporite unit/s name	Keuper facies
Evaporite unit/s age	Carnian-Rhaetian (Upper Triassic)
Evaporite unit/s origin	Marine
Classif. (Hudec and Jackson, 2009)	Ductile piercement
Classif. (Jackson and Talbot, 1986)	Salt stock
Other comments	The onset of diapirism is unknown.

LOCATION



SHAPE AND SUB-SURFACE STRUCTURE



STRATIGRAPHY AND STRUCTURE

Evaporite unit/s composition	Gypsum-Claystone-Marlstone-Dolomite
Post-evaporite and pre-kinematic unit/s	Quaternary (alluvial and colluvial detrital deposits)
Syn-kinematic unit/s	Quaternary
Post-kinematic unit/s (or post-evaporite deposition when undeformed)	Quaternary (alluvial and colluvial detrital deposits)
Age of evaporite flow or deformation (when deformed)	Quaternary / Active now(?)
Flow or deforming triggering mechanisms	nd
Halokinetic structures	Elevation and folding of the Plio-Quaternary (alluvial and colluvial detrital deposits)

SUB-SURFACE DATA AVAILABILITY

Available borehole data	No
Available seismic data	No

MAIN REFERENCES

Stratigraphy	Daudet et al. (2020)
Regional Stratigraphy	Daudet et al. (2020)
Structure	Rodríguez-Estrella (1983)
Regional Structure	Pérez-López and Sanz de Galdeano (1994)
Gravimetry	Ayala et al. (2016)
Petrophysics/Paleomagnetism	nd

GEOLOGY (GEODE IGME)

