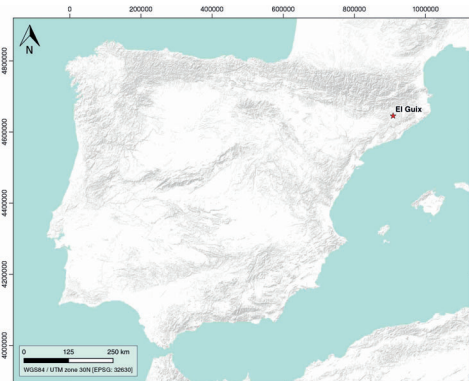


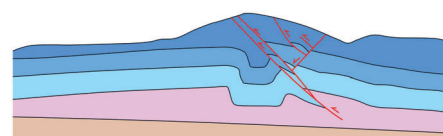
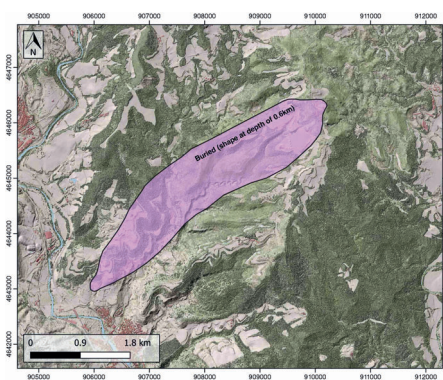
GENERAL INFORMATION

Structure type	Evaporite-cored anticline
Deformed/Undeformed	Deformed
Geological Setting	Ebro foreland basin, Catalan Potash sub-basin
Outcropping/buried	Buried
Evaporite unit/s name	Cardona Fm.
Evaporite unit/s age	Priabonian (Eocene)
Evaporite unit/s origin	Marine
Classif. (Hudec and Jackson, 2009)	Ductile piercement
Classif. (Jackson and Talbot, 1986)	Salt anticline
Other comments	Unprecise growth age of the Cardona, Suria and El Guix anticlines because of the absence of related syntectonic sediments.

LOCATION



SHAPE AND SUB-SURFACE STRUCTURE



STRATIGRAPHY AND STRUCTURE

Evaporite unit/s composition	Halite-Anhydrite-Carnallite-Sylvite-Shale
Post-evaporite and pre-kinematic unit/s	Oligocene (Barbastro and Súrria Fms., marlstones, sandstones and shales) ; Oligocene (Castelltallat Fm., limestones, marly limestones, marlstones) ; Upper Oligocene (Solsona Fm., sandstones, red clays, microconglomerates)
Syn-kinematic unit/s	nd
Post-kinematic unit/s (or post-evaporite desposition when undeformed)	Quaternary (alluvial and colluvial detrital deposits)
Age of evaporite flow or deformation (when deformed)	Lower Oligocene, Quaternary / Active now(?)
Flow or deforming triggering mechanisms	Moderate folding of the overlying units and thrusting ; Quaternary fault activity
Halokinetic structures	Triangle zone development / thrust faults

SUB-SURFACE DATA AVAILABILITY

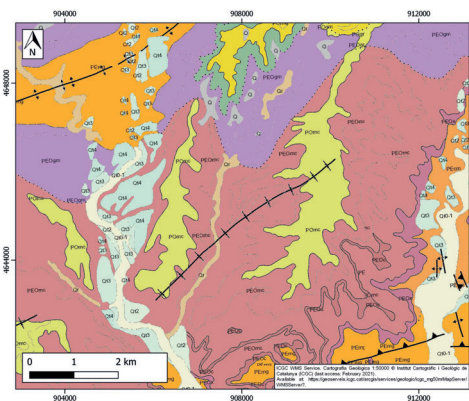
Available borehole data	Yes
Available seismic data	Yes



MAIN REFERENCES

Stratigraphy	Del Santo et al. (2000)
Regional Stratigraphy	Vergés et al. (2002)
Structure	Sans (2003)
Regional Structure	Vergés and Burbank (1996)
Gravimetry	Ayala et al. (2016)
Petrophysics/Paleomagnetism	Sans et al. (2003)

GEOLOGY (GEODE IGME)



IBERIAN
EVAPORITE
STRUCTURE
DATABASE