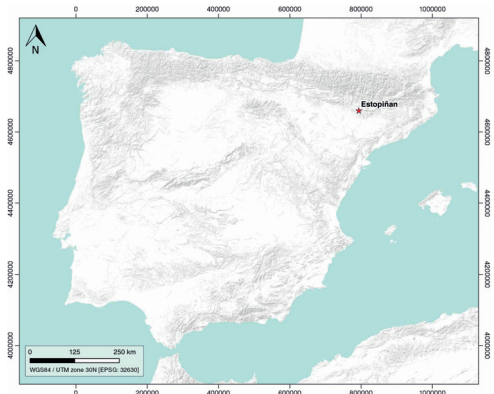


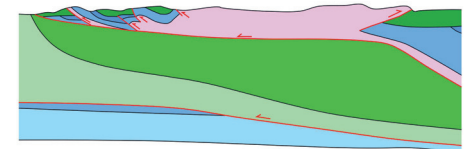
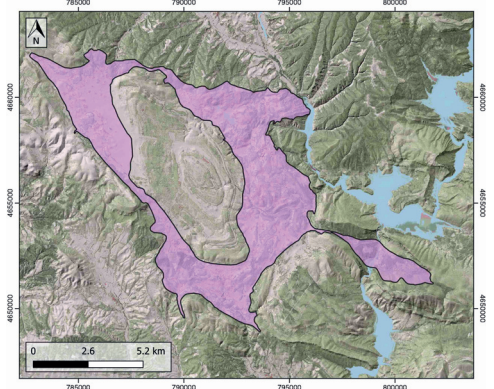
GENERAL INFORMATION

Structure type	Evaporite body
Deformed/Undeformed	Deformed
Geological Setting	South Pyrenees Central Unit, Sierras Marginales, Boltaña-Balzes thrust sheet
Outcropping/buried	Outcropping
Evaporite unit/s name	El Pont de Suert Fm.
Evaporite unit/s age	Upper Anisian and Carnian-Rhaetian (Middle-Upper Triassic)
Evaporite unit/s origin	Marine
Classif. (Hudec and Jackson, 2009)	No diapirism
Classif. (Jackson and Talbot, 1986)	No diapirism
Other comments	Evaporites outcrop in both flanks of the NW-SE trending Estopiñan syncline and in the core of the E-W trending Canelles anticline.

LOCATION



SHAPE AND SUB-SURFACE STRUCTURE



STRATIGRAPHY AND STRUCTURE

Evaporite unit/s composition	Shale-Gypsum-Anhydrite-Ophites
Post-evaporite and pre-kinematic unit/s	Lower Jurassic (limestones, dolostones and shales) ; Upper Santonian-Maastrichtian (calcarenites and limestones) ; Maastrichtian-Paleocene (Garumn Facies, carbonates and shales) ; Palaeocene-Lower Eocene (shallow marines carbonates) ; Upper Eocene-Oligocene (evaporites and detrital deposits)
Syn-kinematic unit/s	Lutetian-Early Priabonian (marlstones, mudstones, limestones, sandstones) ; Late Oligocene-Early Miocene (alluvial fan conglomerates)
Post-kinematic unit/s (or post-evaporite deposition when undeformed)	Quaternary (alluvial and colluvial detrital deposits)
Age of evaporite flow or deformation (when deformed)	Eocene, Oligocene to Miocene
Flow or deforming triggering mechanisms	Translation-rotation of the western end of the Sierras Marginales, and compression
Halokinetic structures	Thrust faults / thickness variations / Progressive Unconformities

SUB-SURFACE DATA AVAILABILITY

Available borehole data	Yes
Available seismic data	Yes

MAIN REFERENCES

Stratigraphy	Salvany (1999)
Regional Stratigraphy	Santolaria et al. (2020)
Structure	Santolaria et al. (2017)
Regional Structure	Cámara and Flinch (2017)
Gravimetry	Santolaria et al. (2014)
Petrophysics/Paleomagnetism	Muñoz et al. (2013)

GEOLOGY (GEODE IGME)

