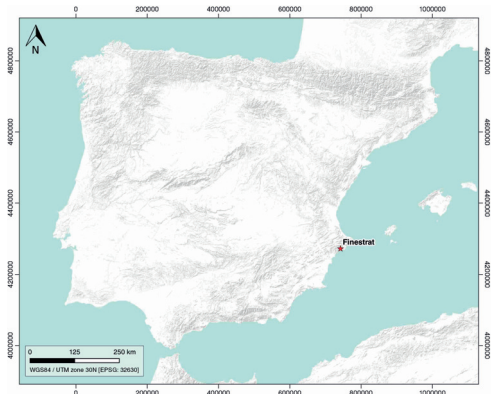


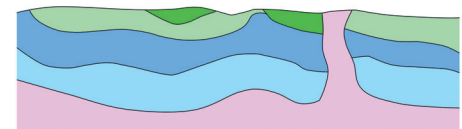
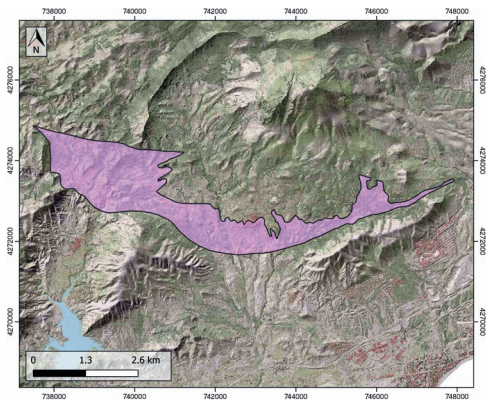
GENERAL INFORMATION

Structure type	Evaporite Diapir
Deformed/Undeformed	Deformed
Geological Setting	Betic system, Pre-Betic cordillera
Outcropping/buried	Outcropping
Evaporite unit/s name	Keuper Facies
Evaporite unit/s age	Carnian-Rhaetian (Upper Triassic)
Evaporite unit/s origin	Marine
Classif. (Hudec and Jackson, 2009)	Passive piercement
Classif. (Jackson and Talbot, 1986)	Salt wall
Other comments	Reactivation stage strongly influenced by Mid Miocene transpression. The diapir rose reactively in the late stage in a pull-apart basin bounded by R-shears and P-shears.

LOCATION



SHAPE AND SUB-SURFACE STRUCTURE



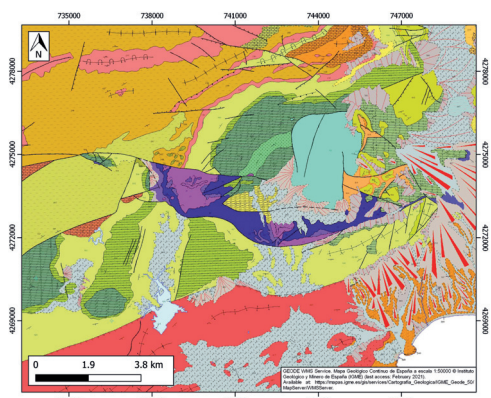
STRATIGRAPHY AND STRUCTURE

Evaporite unit/s composition	Gypsum-Anhydrite-Mudstone-Sandstone
Post-evaporite and pre-kinematic unit/s	Lower Jurassic (limestones) ; Barremian-Albian (limestones, marls, micritic limestones) ; Upper Cretaceous (tabular limestones, marly limestones, calcarenites, dolostones) ; Aquitanian -Serravallian (marlstones, marly limestones, limestones)
Syn-kinematic unit/s	Eocene (marlstones, marly limestones, limestones) ; Late Oligocene (limestones, carbonate breccia) ; Serravallian-Tortonian (marlstones, calcarenites)
Post-kinematic unit/s (or post-evaporite deposition when undeformed)	Quaternary (alluvial and colluvial detrital deposits)
Age of evaporite flow or deformation (when deformed)	Eocene to Oligocene, Miocene
Flow or deforming triggering mechanisms	Differential loading (main stage) and Mid Miocene transpression (reactivation stage)
Halokinetic structures	Reverse and normal faults / anticline-syncline folding / progressive unconformities

SUB-SURFACE DATA AVAILABILITY

Available borehole data	No
Available seismic data	Yes

GEOLOGY (GEODE IGME)



MAIN REFERENCES

Stratigraphy	Cater (1987)
Regional Stratigraphy	Martín-Martín et al. (2020)
Structure	del Olmo et al. (2015)
Regional Structure	Guerrera and Martín-Martín (2014)
Gravimetry	Ayala et al. (2016)
Petrophysics/Paleomagnetism	nd



IBERIAN
EVAPORITE
STRUCTURE
DATABASE