

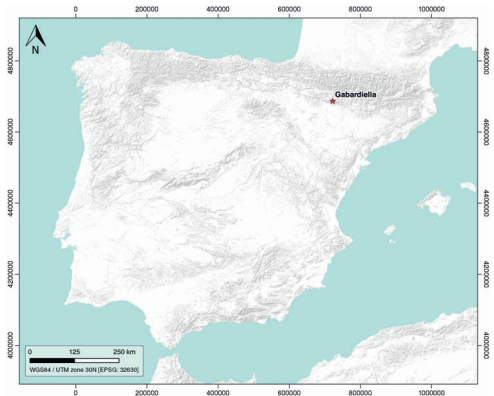
Gabardiella

ID #o6o

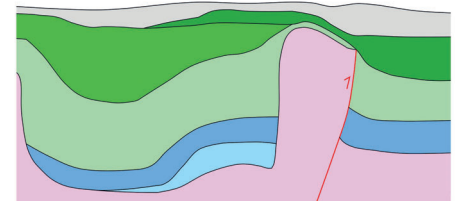
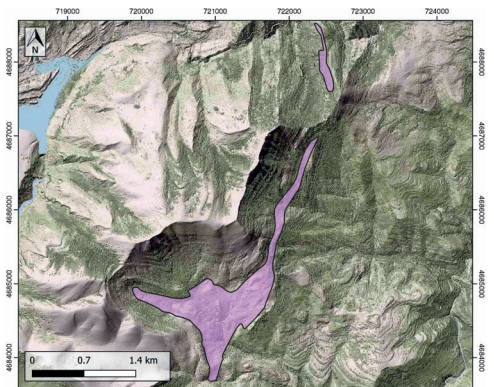
GENERAL INFORMATION

Structure type	Evaporite-cored anticline
Deformed/Undeformed	Deformed
Geological Setting	Southern Pyrenees, External Ranges
Outcropping/buried	Outcropping
Evaporite unit/s name	El Pont de Suert Fm.
Evaporite unit/s age	Upper Anisian and Carnian-Rhaetian (Middle-Upper Triassic)
Evaporite unit/s origin	Marine
Classif. (Hudec and Jackson, 2009)	Thrust piercement
Classif. (Jackson and Talbot, 1986)	Salt anticline
Other comments	Structural and stratigraphic origin related to the Guarga thrust. Central External Sierras show a set of N-S to NW-SE anticlines, perpendicular to the structural trend of the Pyrenees, that become younger and smaller westwards (Pico del Águila, Bentué de Rasal, Gabardiella, Rasal; see i.e. Vidal-Royo, et al., 2013)

LOCATION



SHAPE AND SUB-SURFACE STRUCTURE



STRATIGRAPHY AND STRUCTURE

Evaporite unit/s composition	Shale-Marlstone-Gypsum-Anhydrite-Halite
Post-evaporite and pre-kinematic unit/s	Upper Cretaceous (Adraén Fm., limestones); Palaeocene (Garumnian, Tremp Fm., mudstone, siltstone and sandstone); Early Lutetian (Guara Fm., lower part, limestones rich in foraminifera)
Syn-kinematic unit/s	Late Lutetian (Guara Fm., upper part, limestones and sandstones); Lutetian-Early Priabonian (Arguís Fm.); Late Eocene (Belsué-Atarés Fm.); Late Eocene-Early Oligocene (Campodarbe Fm.)
Post-kinematic unit/s (or post-evaporite deposition when undeformed)	Late Oligocene-Miocene (Uncastillo Fm., conglomerates), Quaternary
Age of evaporite flow or deformation (when deformed)	late Lutetian to Oligocene
Flow or deforming triggering mechanisms	E-W shortening related to the displacement of the South Central Pyrenean Unit
Halokinetic structures	Joint sets / Normal faults / Thickness variations / Progressive unconformities

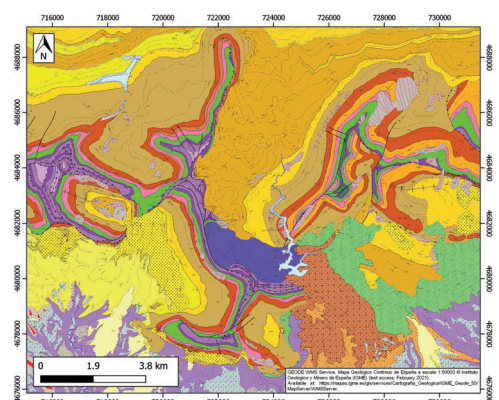
SUB-SURFACE DATA AVAILABILITY

Available borehole data	Yes
Available seismic data	Yes

MAIN REFERENCES

Stratigraphy	Nalpas et al. (2003)
Regional Stratigraphy	Vidal-Royo et al. (2013)
Structure	Anastasio et al. (2001)
Regional Structure	Moss (2005)
Gravimetry	Ayala et al. (2016)
Petrophysics/Paleomagnetism	Pueyo-Morer et al. (1997)

GEOLOGY (GEODE IGME)



IBERIAN
EVAPORITE
STRUCTURE
DATABASE