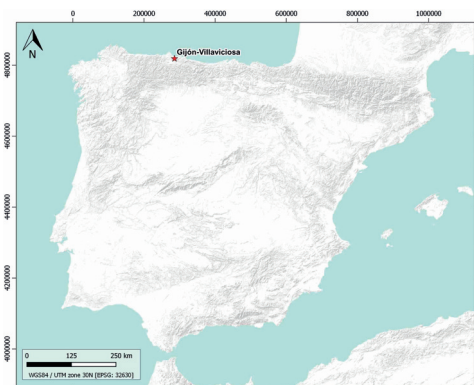


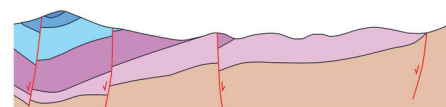
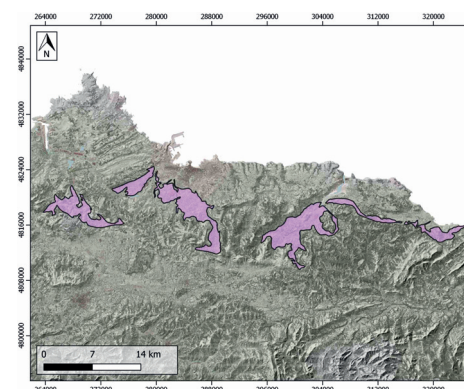
## GENERAL INFORMATION

Structure type	Evaporite body
Deformed/Undeformed	Deformed
Geological Setting	Iberian Massif (Asturian Basin)
Outcropping/buried	Outcropping
Evaporite unit/s name	Keuper facies, Middle Muschelkalk facies
Evaporite unit/s age	Upper Anisian and Carnian-Rhaetian (Middle-Upper Triassic)
Evaporite unit/s origin	Marine
Classif. (Hudec and Jackson, 2009)	No diapirism
Classif. (Jackson and Talbot, 1986)	No diapirism
Other comments	The Asturian basin is considered the westwards continuation of the Basque-Cantabrian basin. Diapirism in the Asturian basin have been only identified offshore, whereas in onshore evaporites are only related to extensional faults and the Mesozoic cover is undetached. Anhydrite found in sub-surface.

## LOCATION



## SHAPE AND SUB-SURFACE STRUCTURE



## STRATIGRAPHY AND STRUCTURE

Evaporite unit/s composition	Shales-Gypsum-Red Claystones-Anhydrite
Post-evaporite and pre-kinematic unit/s	Lower Jurassic (limestones, dolostones and black shales) ; Late Lower Jurassic (limestones, marlstones and shales) ; Middle Jurassic (Conglomerates and sandstones)
Syn-kinematic unit/s	Late Jurassic (limestones, marly limestones, claystones and sandstones)
Post-kinematic unit/s (or post-evaporite deposition when undeformed)	Lower Cretaceous ; Upper Cretaceous ; Paleogene ; Quaternary
Age of evaporite flow or deformation (when deformed)	Upper Jurassic
Flow or deforming triggering mechanisms	Extensional faulting processes which preceded the opening of the Bay of Biscay
Halokinetic structures	Normal faulting / Fractures / Basin compartmentalization / Thickness variations

## SUB-SURFACE DATA AVAILABILITY

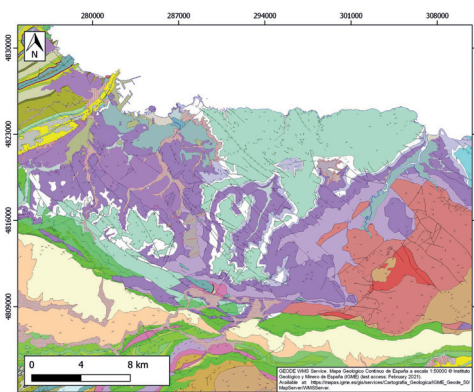
Available borehole data	Yes
Available seismic data	Yes



## MAIN REFERENCES

Stratigraphy	Claverol et al. (2004)
Regional Stratigraphy	Luque-Cabal et al. (2011)
Structure	López-Gómez et al. (2019)
Regional Structure	Carola et al. (2013)
Gravimetry	Ayala et al. (2016)
Petrophysics/Paleomagnetism	nd

## GEOLOGY (GEODE IGME)



IBERIAN  
EVAPORITE  
STRUCTURE  
DATABASE