

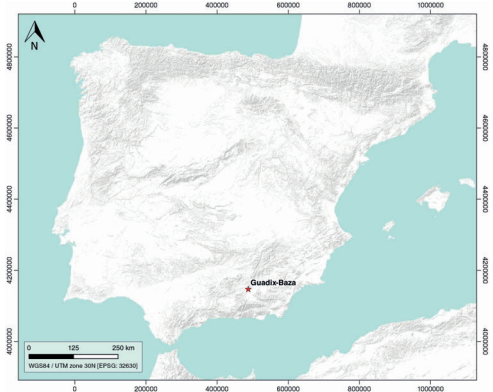
Guadix-Baza

ID #101

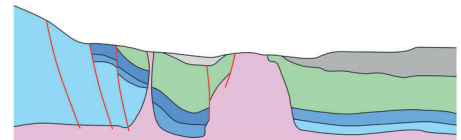
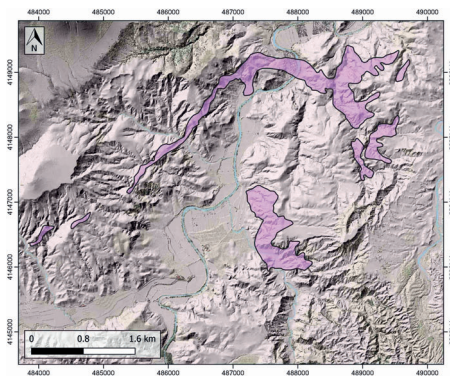
GENERAL INFORMATION

Structure type	Evaporite Diapir
Deformed/Undeformed	Deformed
Geological Setting	Betic system, Guadix-Baza Basin
Outcropping/buried	Outcropping
Evaporite unit/s name	Keuper facies
Evaporite unit/s age	Carnian-Rhaetian (Upper Triassic)
Evaporite unit/s origin	Marine
Classif. (Hudec and Jackson, 2009)	Passive piercement
Classif. (Jackson and Talbot, 1986)	Salt stock
Other comments	Exceptionally gypsum-rich Keuper facies in this area.

LOCATION



SHAPE AND SUB-SURFACE STRUCTURE



STRATIGRAPHY AND STRUCTURE

Evaporite unit/s composition	Shale-Marlstone-Dolomite-Gypsum
Post-evaporite and pre-kinematic unit/s	Lower Jurassic (limestones) ; Middle-Upper Jurassic (limestones, marly limestones, marlstones) ; Lower Cretaceous (Neocomian, marlstones and marly limestones)
Syn-kinematic unit/s	Albian-Santonian (green marlstones, marly breccias, marly limestones and sandstones)
Post-kinematic unit/s (or post-evaporite deposition when undeformed)	Pliocene (siltstones, sandstones, conglomerates) ; Quaternary
Age of evaporite flow or deformation (when deformed)	Albian to Santonian
Flow or deforming triggering mechanisms	Depocenter instability, differential loading mechanisms
Halokinetic structures	Normal faults / joints / progressive unconformities

SUB-SURFACE DATA AVAILABILITY

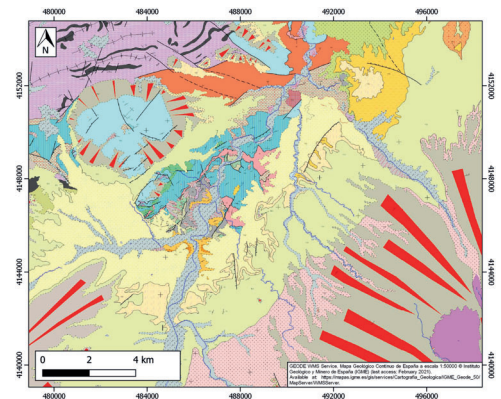
Available borehole data	No
Available seismic data	No



MAIN REFERENCES

Stratigraphy	Mingorance (1994)
Regional Stratigraphy	IGME MAGNA50 (993-BENALUA DE GUADIX)
Structure	Pujalte et al. (2014)
Regional Structure	García-Tortosa et al. (2008)
Gravimetry	Sanz de Galdeano et al. (2007)
Petrophysics/Paleomagnetism	nd

GEOLOGY (GEODE IGME)



IBERIAN
EVAPORITE
STRUCTURE
DATABASE