

Guarga Thrust

ID #062

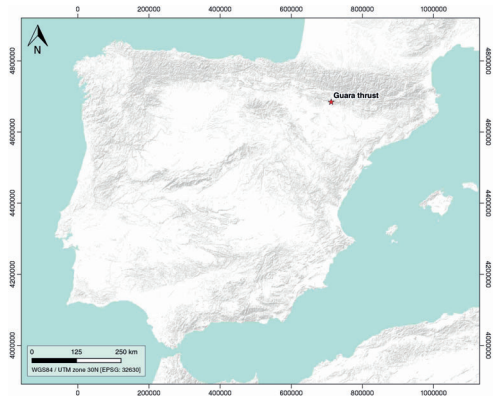
SUMARIZED INDEX CARD

Downloaded from Iberian Evaporite Structure DataBase

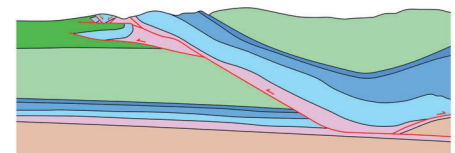
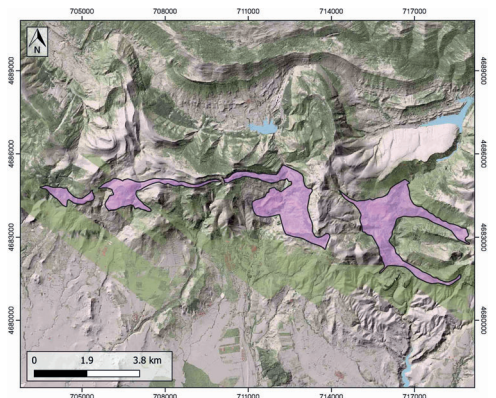
GENERAL INFORMATION

Structure type	Evaporite-detached thrust
Deformed/Undeformed	Deformed
Geological Setting	Southern Pyrenees, External Ranges
Outcropping/buried	Outcropping
Evaporite unit/s name	El Pont de Suert Fm.
Evaporite unit/s age	Upper Anisian and Carnian-Rhaetian (Middle-Upper Triassic)
Evaporite unit/s origin	Marine
Classif. (Hudec and Jackson, 2009)	Thrust piercement
Classif. (Jackson and Talbot, 1986)	Salt wall
Other comments	-

LOCATION



SHAPE AND SUB-SURFACE STRUCTURE



STRATIGRAPHY AND STRUCTURE

Evaporite unit/s composition	Shale-Marlstone-Gypsum-Anhydrite-Halite
Post-evaporite and pre-kinematic unit/s	Upper Cretaceous (Adraen Fm., limestones); Cretaceous-Palaeocene (Garumian, Tremp Fm., sandstones, mudstones); Lutetian (Guara Fm., limestones rich in foraminifera); Bartonian-Early Priabonian (Arguis Fm., marly siltstones and sandstones); Late Eocene (Belsué-Atarés Fm., sandstones, conglomerates)
Syn-kinematic unit/s	Late Eocene-Early Oligocene (Campodarbe Fm., sandstones and claystones); Late Chattian-Aquitainian (Uncastillo Fm., conglomerates)
Post-kinematic unit/s (or post-evaporite deposition when undeformed)	Late Oligocene-Miocene (Uncastillo Fm., conglomerates), Quaternary
Age of evaporite flow or deformation (when deformed)	Oligocene to Miocene
Flow or deforming triggering mechanisms	Thrust emplacement
Halokinetic structures	Thrust faults / thickness variations / joints / calcite veins

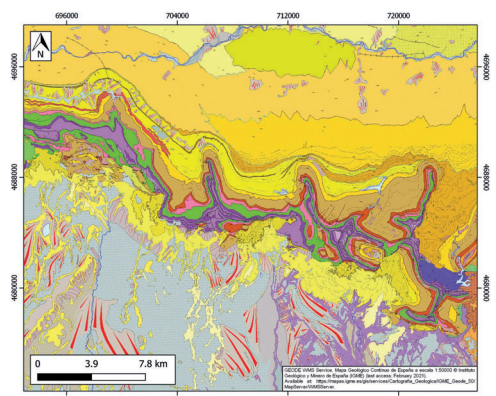
SUB-SURFACE DATA AVAILABILITY

Available borehole data	Yes
Available seismic data	Yes

MAIN REFERENCES

Stratigraphy	Cámara and Klimowitz (1985)
Regional Stratigraphy	Vidal-Royo et al. (2013)
Structure	Cámara and Klimowitz (1985)
Regional Structure	Cámara and Flinch (2017)
Gravimetry	Ayala et al. (2016)
Petrophysics/Paleomagnetism	Pueyo-Morer et al. (1997)

GEOLOGY (GEODE IGME)



IBERIAN
EVAPORITE
STRUCTURE
DATABASE