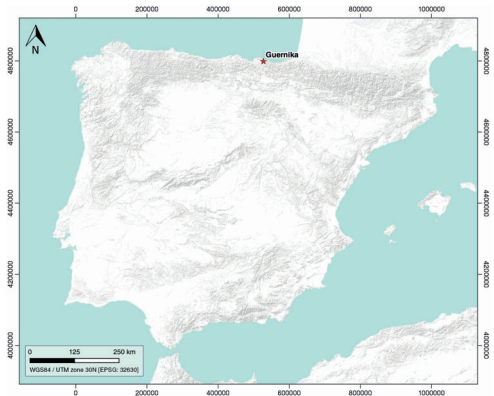


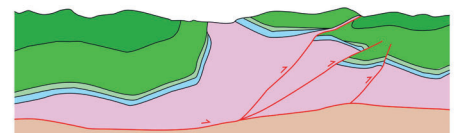
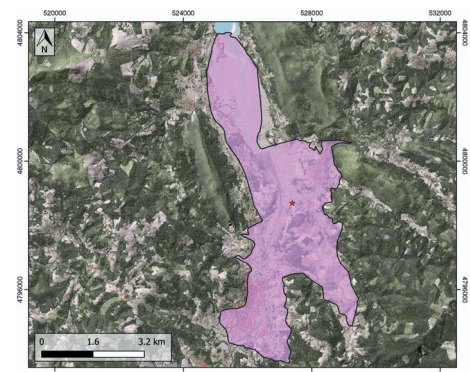
GENERAL INFORMATION

Structure type	Evaporite Diapir
Deformed/Undeformed	Deformed
Geological Setting	Basque-Cantabrian Basin, Basque Arc
Outcropping/buried	Outcropping
Evaporite unit/s name	Keuper facies
Evaporite unit/s age	Carnian-Rhaetian (Upper Triassic)
Evaporite unit/s origin	Marine
Classif. (Hudec and Jackson, 2009)	Passive piercement, Thrust piercement
Classif. (Jackson and Talbot, 1986)	Salt wall, Welded
Other comments	Salt wall partially welded during Alpine compression, but the structure of syn-diapiric formation is well-preserved.

LOCATION



SHAPE AND SUB-SURFACE STRUCTURE



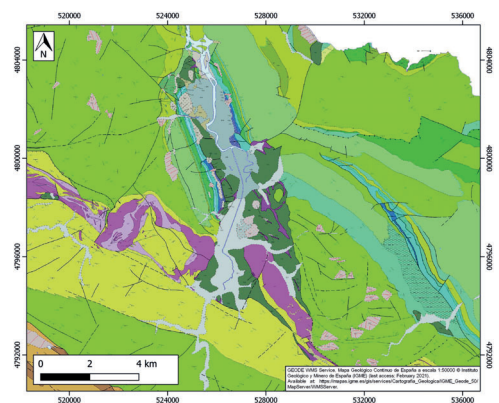
STRATIGRAPHY AND STRUCTURE

Evaporite unit/s composition	Claystone-Gypsum-Halite-Anhydrite-Ophites
Post-evaporite and pre-kinematic unit/s	Jurassic (dolostones, marls and oolitic limestones)
Syn-kinematic unit/s	Aptian-middle Albian (Urgonian Group; Punta del Bakio Unit) / Upper Albian-lower Cenomanian (Deva Fm.; Cabo Villano Fm.; Plenzia Fm.)
Post-kinematic unit/s (or post-evaporite deposition when undeformed)	Quaternary (alluvial and colluvial detrital deposits)
Age of evaporite flow or deformation (when deformed)	Burdigalian to Tortonian and Middle Cretaceous
Flow or deforming triggering mechanisms	High angle extensional faults (early stage) and northward-propagating thrust sheet (late stage)
Halokinetic structures	Progressive unconformities / Normal high-angle faults / joints / thickness variations

SUB-SURFACE DATA AVAILABILITY

Available borehole data	Yes
Available seismic data	Yes

GEOLOGY (GEODE IGME)



MAIN REFERENCES

Stratigraphy	Roca et al. (2021)
Regional Stratigraphy	Pedraza et al. (2017)
Structure	Roca et al. (2021)
Regional Structure	García-Mondéjar et al. (1996)
Gravimetry	Nettleton (1968)
Petrophysics/Paleomagnetism	Soto et al. (2017)

