

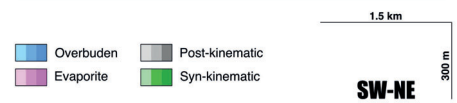
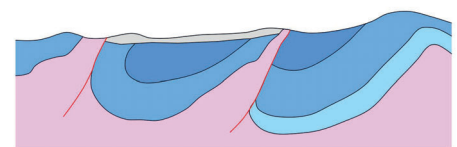
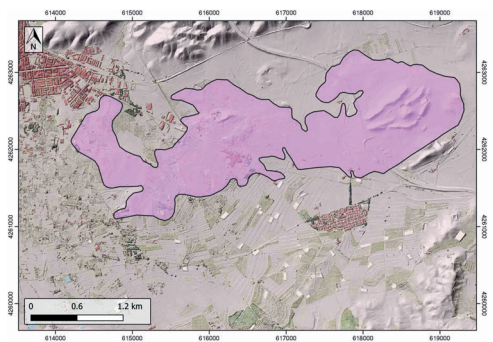
GENERAL INFORMATION

Structure type	Evaporite Diapir
Deformed/Undeformed	Deformed
Geological Setting	Betic system, Pre-Betic cordillera
Outcropping/buried	Outcropping
Evaporite unit/s name	Keuper facies
Evaporite unit/s age	Carnian-Rhaetian (Upper Triassic)
Evaporite unit/s origin	Marine
Classif. (Hudec and Jackson, 2009)	Ductile piercement
Classif. (Jackson and Talbot, 1986)	Salt stock
Other comments	-

LOCATION



SHAPE AND SUB-SURFACE STRUCTURE



STRATIGRAPHY AND STRUCTURE

Evaporite unit/s composition	Claystone-Siltstone-Gypsum-Anhydrite-Halite
Post-evaporite and pre-kinematic unit/s	Jurassic-Cretaceous carbonate cover
Syn-kinematic unit/s	nd
Post-kinematic unit/s (or post-evaporite deposition when undeformed)	Paleogene to Quaternary detrital deposits
Age of evaporite flow or deformation (when deformed)	late Cretaceous to Miocene
Flow or deforming triggering mechanisms	nd
Halokinetic structures	Syncline-Anticline folding / Normal Faults / Reverse faults

SUB-SURFACE DATA AVAILABILITY

Available borehole data	Yes
Available seismic data	No

MAIN REFERENCES

Stratigraphy	Navarro-Hervás and Rodríguez-Estrella (1985)
Regional Stratigraphy	Escosa et al. (2018)
Structure	Navarro-Hervás and Rodríguez-Estrella (1985)
Regional Structure	Mancheño and Rodríguez-Estrella (1985)
Gravimetry	Gorosábel and Castaño-Fernández (1995)
Petrophysics/Paleomagnetism	nd

GEOLOGY (GEODE IGME)

