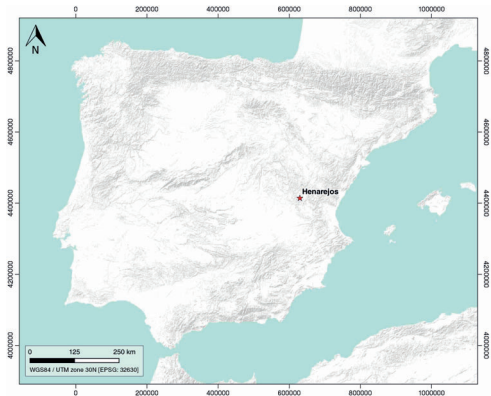


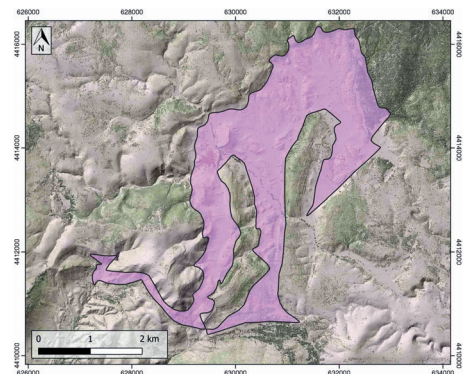
GENERAL INFORMATION

Structure type	Evaporite body
Deformed/Undeformed	Undeformed
Geological Setting	Iberian Range, Teruel-Jiloca Graben
Outcropping/buried	Outcropping
Evaporite unit/s name	Keuper facies
Evaporite unit/s age	Carnian-Rhaetian (Middle-Upper Triassic)
Evaporite unit/s origin	Marine
Classif. (Hudec and Jackson, 2009)	No diapirism
Classif. (Jackson and Talbot, 1986)	No diapirism
Other comments	-

LOCATION



SHAPE AND SUB-SURFACE STRUCTURE



STRATIGRAPHY AND STRUCTURE

Evaporite unit/s composition	Marlstone-Gypsum-Shale
Syn-kinematic unit/s	-
Post-evaporite and pre-kinematic unit/s	-
Post-kinematic unit/s (or post-evaporite deposition when undeformed)	Jurassic (marlstones, limestones and dolostones) ; Quaternary
Age of evaporite flow or deformation (when deformed)	Undeformed
Flow or deforming triggering mechanisms	-
Halokinetic structures	-

SUB-SURFACE DATA AVAILABILITY

Available borehole data	No
Available seismic data	Yes

MAIN REFERENCES

Stratigraphy	Benito et al. (2011)
Regional Stratigraphy	Ezquerro et al. (2012)
Structure	García and Casas-Sainz (2000)
Regional Structure	Liesa et al. (2018)
Gravimetry	Ayala et al. (2016)
Petrophysics/Paleomagnetism	nd

GEOLOGY (GEODE IGME)

