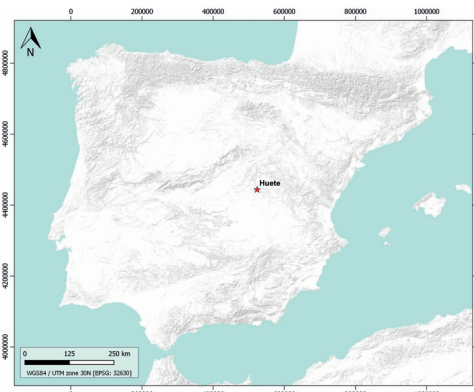


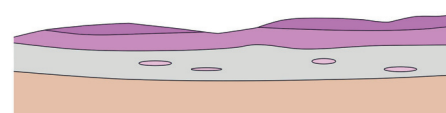
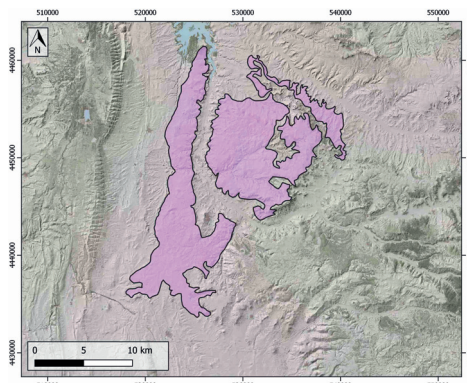
GENERAL INFORMATION

| | |
|-------------------------------------|---|
| Structure type | Evaporite body |
| Deformed/Undeformed | Slightly deformed |
| Geological Setting | Tagus Basin, Loranca Sub-Basin |
| Outcropping/buried | Outcropping |
| Evaporite unit/s name | Unnamed |
| Evaporite unit/s age | Aquitanian-Burdigalian (Lower Miocene) |
| Evaporite unit/s origin | Continental |
| Classif. (Hudec and Jackson, 2009) | No diapirism |
| Classif. (Jackson and Talbot, 1986) | No diapirism |
| Other comments | Stratigraphic successions of Early Miocene age (Tórtola, Villalba de la Sierra and Valdeganga depositional systems) include interbedded deposits of playa-lake and meandering river environments. |

LOCATION



SHAPE AND SUB-SURFACE STRUCTURE



STRATIGRAPHY AND STRUCTURE

| | |
|--|---|
| Evaporite unit/s composition | Gypsum |
| Syn-kinematic unit/s | Evaporitic rocks |
| Post-evaporite and pre-kinematic unit/s | - |
| Post-kinematic unit/s (or post-evaporite deposition when undeformed) | Middle Miocene; Upper Miocene ; Pliocene ; Quaternary |
| Age of evaporite flow or deformation (when deformed) | Miocene |
| Flow or deforming triggering mechanisms | Alpine compression, Altomira range development |
| Halokinetic structures | Syncline-Anticline folding / thrust faults |

SUB-SURFACE DATA AVAILABILITY

| | |
|-------------------------|-----|
| Available borehole data | Yes |
| Available seismic data | Yes |

MAIN REFERENCES

| | |
|-----------------------------|-------------------------------|
| Stratigraphy | Arribas-Mocoroa et al. (1996) |
| Regional Stratigraphy | Civis et al. (2004) |
| Structure | Valcárcel et al. (2016) |
| Regional Structure | Giner-Robles et al. (2012) |
| Gravimetry | Ayala et al. (2016) |
| Petrophysics/Paleomagnetism | Valcárcel et al. (2016) |

GEOLOGY (GEODE IGME)

