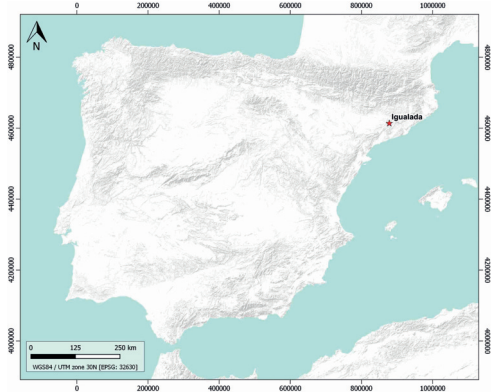


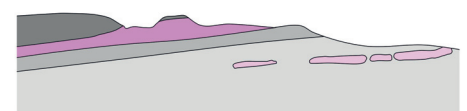
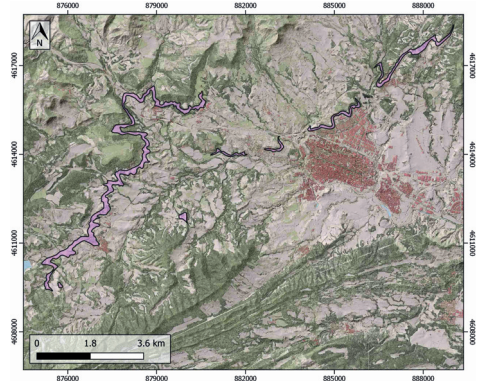
## GENERAL INFORMATION

Structure type	Evaporite body
Deformed/Undeformed	Undeformed
Geological Setting	Ebro foreland basin, Southeastern Domain
Outcropping/buried	Outcropping
Evaporite unit/s name	Òdena Gypsum Fm.
Evaporite unit/s age	Priabonian (Eocene)
Evaporite unit/s origin	Marine
Classif. (Hudec and Jackson, 2009)	No diapirism
Classif. (Jackson and Talbot, 1986)	No diapirism
Other comments	-

## LOCATION



## SHAPE AND SUB-SURFACE STRUCTURE



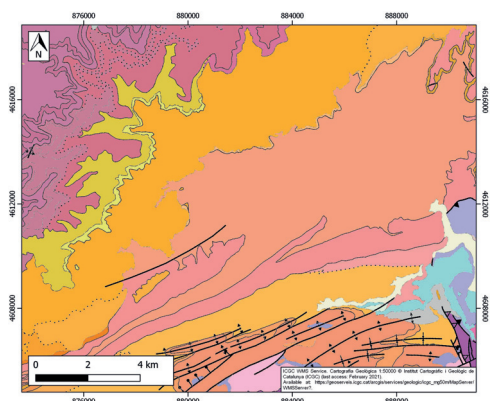
## STRATIGRAPHY AND STRUCTURE

Evaporite unit/s composition	Gypsum-Shale-Marlstone-Anhydrite
Post-evaporite and pre-kinematic unit/s	-
Syn-kinematic unit/s	-
Post-kinematic unit/s (or post-evaporite deposition when undeformed)	Upper Priabonian ; Lower Oligocene ; Upper Miocene ; Quaternary
Age of evaporite flow or deformation (when deformed)	Undeformed
Flow or deforming triggering mechanisms	-
Halokinetic structures	-

## SUB-SURFACE DATA AVAILABILITY

Available borehole data	No
Available seismic data	Yes

## GEOLOGY (GEODE IGME)



## MAIN REFERENCES

Stratigraphy	Serra-Kiel et al. (2003)
Regional Stratigraphy	Sanjuan et al. (2012)
Structure	IGME MAGNA 50. Sheet 391 (Igualada)
Regional Structure	Anadón et al. (1985)
Gravimetry	Guinea et al. (2012)
Petrophysics/Paleomagnetism	Costa et al. (2010)

