

GENERAL INFORMATION

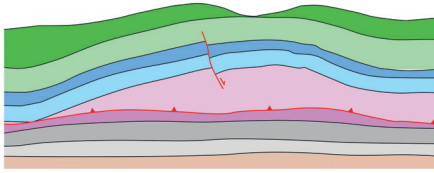
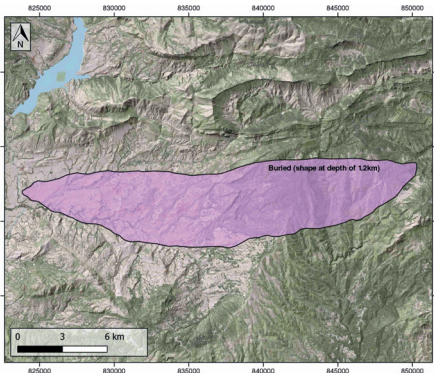
Structure type	Evaporite-cored anticline
Deformed/Undeformed	Deformed
Geological Setting	South Pyrenees Central Unit, Montsec thrust sheet
Outcropping/buried	Buried
Evaporite unit/s name	Keuper facies
Evaporite unit/s age	Carnian-Rhaetian (Upper Triassic)
Evaporite unit/s origin	Marine
Classif. (Hudec and Jackson, 2009)	Thrust piercement
Classif. (Jackson and Talbot, 1986)	Salt roller
Other comments	Detachment anticline cored by a 1.5km thick succession of Triassic rocks. Detachment level located at the top of Priabonian salt succession (see Muñoz et al., 2018)

LOCATION



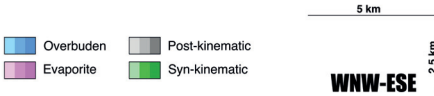
SHAPE AND SUB-SURFACE STRUCTURE

Evaporite unit/s composition	Mudstone-Halite-Anhydrite-Claystone
Post-evaporite and pre-kinematic unit/s	Jurassic (dolostones, limestones, marly limestones) ; Lower Cretaceous (limestones) ; Cenomanian-Lower Santonian (limestones)
Syn-kinematic unit/s	Upper Santonian-Campanian (limestones, silty limestones) ; Campanian-Maastrichtian (Areny Group, sandstones and limestones) ; Palaeocene-Early Eocene (Garum facies, carbonates and mudstones)
Post-kinematic unit/s (or post-evaporite desposition when undeformed)	-
Age of evaporite flow or deformation (when deformed)	late Cretaceous to Eocene
Flow or deforming triggering mechanisms	Montsec thrust sheet
Halokinetic structures	Anticline folding



SUB-SURFACE DATA AVAILABILITY

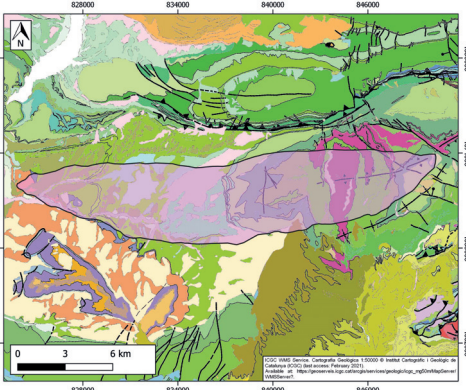
Available borehole data	Yes
Available seismic data	Yes



MAIN REFERENCES

Stratigraphy	Chanvry et al. (2018)
Regional Stratigraphy	Mencos et al. (2015)
Structure	Robert et al. (2018)
Regional Structure	Muñoz et al. (2018)
Gravimetry	Ayala et al. (2016)
Petrophysics/Paleomagnetism	-

GEOLOGY (GEODE IGME)



IBERIAN
EVAPORITE
STRUCTURE
DATABASE