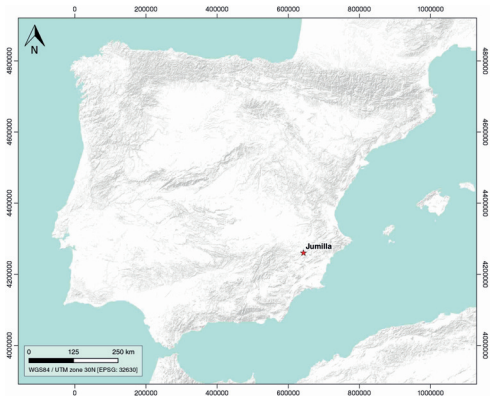


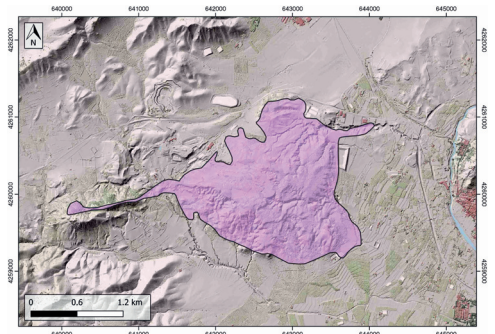
GENERAL INFORMATION

Structure type	Evaporite Diapir
Deformed/Undeformed	Deformed
Geological Setting	Betic system, Pre-Betic cordillera
Outcropping/buried	Outcropping
Evaporite unit/s name	Keuper facies
Evaporite unit/s age	Carnian-Rhaetian (Upper Triassic)
Evaporite unit/s origin	Marine
Classif. (Hudec and Jackson, 2009)	Passive piercement
Classif. (Jackson and Talbot, 1986)	Salt stock
Other comments	The onset of diapirism is unknown. Also known as "El Morrón".

LOCATION



SHAPE AND SUB-SURFACE STRUCTURE



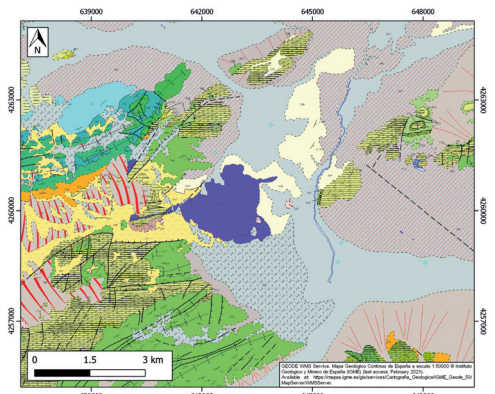
STRATIGRAPHY AND STRUCTURE

Evaporite unit/s composition	Halite-Claystone-Carbonate-Gypsum-Anhydrite
Post-evaporite and pre-kinematic unit/s	Jurassic-Cretaceous carbonate cover
Syn-kinematic unit/s	Miocene to Quaternary (alluvial and colluvial detrital deposits)
Post-kinematic unit/s (or post-evaporite desposition when undeformed)	Quaternary (alluvial and colluvial detrital deposits)
Age of evaporite flow or deformation (when deformed)	Quaternary / Active now(?)
Flow or deforming triggering mechanisms	Miocene subsalt extension, Jumilla fault and Quaternary fault activity
Halokinetic structures	Normal faults / Radial joints / Progressive unconformities

SUB-SURFACE DATA AVAILABILITY

Available borehole data	Yes
Available seismic data	Yes

GEOLOGY (GEODE IGME)



MAIN REFERENCES

Stratigraphy	Escosa et al. (2018)
Regional Stratigraphy	Vilas et al. (2003)
Structure	Escosa et al. (2018)
Regional Structure	Roca et al. (2006)
Gravimetry	Castaño-Fernández (1993)
Petrophysics/Paleomagnetics	nd

