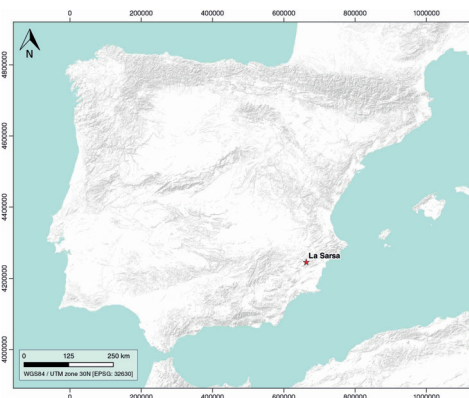


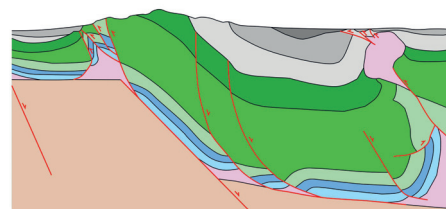
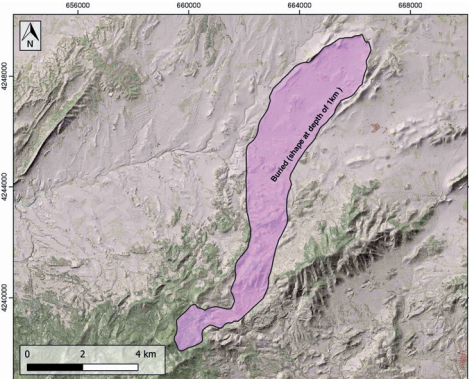
GENERAL INFORMATION

Structure type	Evaporite Diapir
Deformed/Undeformed	Deformed
Geological Setting	Betic system, Pre-Betic cordillera
Outcropping/buried	Buried
Evaporite unit/s name	Keuper Facies
Evaporite unit/s age	Carnian-Rhaetian (Upper Triassic)
Evaporite unit/s origin	Marine
Classif. (Hudec and Jackson, 2009)	Ductile piercement
Classif. (Jackson and Talbot, 1986)	Salt wall, Welded
Other comments	Salt wall collapse and thrust-related welding from Late Maastrichtian time.

LOCATION



SHAPE AND SUB-SURFACE STRUCTURE



STRATIGRAPHY AND STRUCTURE

Evaporite unit/s composition	Gypsum-Shale-Marlstone-Ophites
Syn-kinematic unit/s	Late Jurassic (limestones, dolostones, marlstones, oolitic dolostones, marly limestones) ; Neocomian (limestones, calcarenites) ; Barremian (bioclastic limestones) ; Early Aptian (limestones, calcarenites) ; Late Aptian-Upper Albian (dolostones)
Post-evaporite and pre-kinematic unit/s	Early Jurassic (mudstones, dolostones, marlstones) ; Middle Jurassic (dolostones, oolitic dolostones)
Post-kinematic unit/s (or post-evaporite deposition when undeformed)	Upper Palaeocene; Eocene; Oligocene; Miocene; Pliocene-Quaternary
Age of evaporite flow or deformation (when deformed)	Upper Jurassic to Lower Cretaceous
Flow or deforming triggering mechanisms	Extensional activity of the suprasalt faults
Halokinetic structures	Low-angle unconformities / Normal high-angle faults / joints

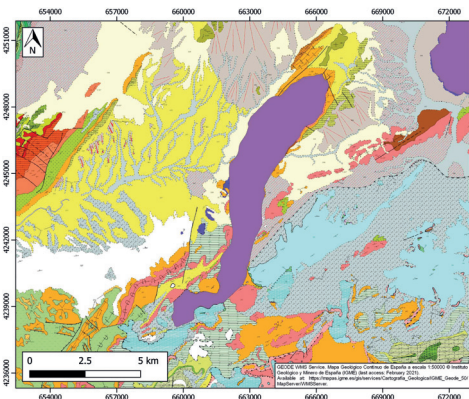
SUB-SURFACE DATA AVAILABILITY

Available borehole data	Yes
Available seismic data	Yes

MAIN REFERENCES

Stratigraphy	Guerrera et al. (2014)
Regional Stratigraphy	Escosa et al. (2018)
Structure	Escosa et al. (2018)
Regional Structure	Mancheño and Rodríguez-Estrella (1985)
Gravimetry	Castaño and Carbó (1995)
Petrophysics/Paleomagnetism	nd

GEOLOGY (GEODE IGME)



IBERIAN
EVAPORITE
STRUCTURE
DATABASE