

# Lecumberri

ID #039

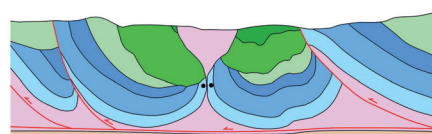
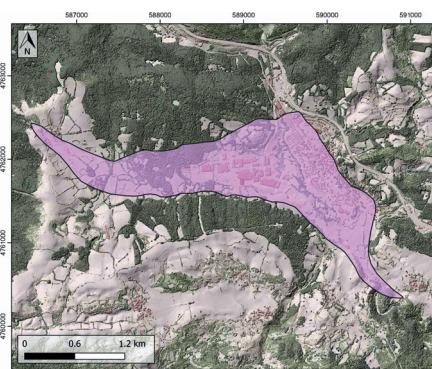
## GENERAL INFORMATION

|                                     |  |
|-------------------------------------|--|
| Structure type                      | Evaporite Diapir   |
| Deformed/Undeformed                 | Deformed   |
| Geological Setting                  | Basque-Cantabrian Basin, Navarra-Álava trough  |
| Outcropping/buried                  | Outcropping  |
| Evaporite unit/s name               | Keuper facies  |
| Evaporite unit/s age                | Carnian-Rhaetian (Upper Triassic)  |
| Evaporite unit/s origin             | Marine   |
| Classif. (Hudec and Jackson, 2009)  | Ductile piercement   |
| Classif. (Jackson and Talbot, 1986) | Salt wall  |
| Other comments                      | Salt motion lasted until syn-orogenic times, as the Maastrichtian layers are also affected by diapirs (see Ducoux et al., 2020). |

## LOCATION



## SHAPE AND SUB-SURFACE STRUCTURE



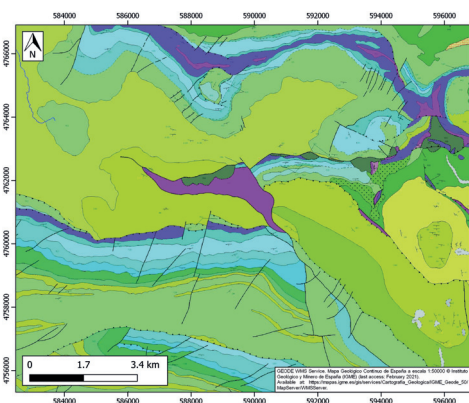
## STRATIGRAPHY AND STRUCTURE

|  |  |
|--|--|
| Evaporite unit/s composition   | Gypsum-Halite-Anhydrite-Claystone-Ophites  |
| Post-evaporite and pre-kinematic unit/s                              | Jurassic (limestones, dolostones, oolitic limestones, marls)   |
| Syn-kinematic unit/s   | Valanginian – Barremian (Weald facies, limestones, clays and sandstones) / Aptian – Albian (limestones, marls, sandstones and lutites) / Cenomanian – Maastrichtian (shales, marls and limestones) |
| Post-kinematic unit/s (or post-evaporite deposition when undeformed) | Quaternary (alluvial and colluvial detrital deposits)  |
| Age of evaporite flow or deformation (when deformed)                 | Upper Jurassic to Upper Cretaceous   |
| Flow or deforming triggering mechanisms                              | Mesozoic extension and tectonic inversion (Upper Cretaceous)   |
| Halokinetic structures   | Normal high-angle faults / joints / thickness variations / progressive unconformities  |

## SUB-SURFACE DATA AVAILABILITY

|                         |     |
|-------------------------|-----|
| Available borehole data | No  |
| Available seismic data  | Yes |

## GEOLOGY (GEODE IGME)



## MAIN REFERENCES

|                             |                         |
|-----------------------------|-------------------------|
| Stratigraphy                | Bodego et al. (2018)    |
| Regional Stratigraphy       | Pedraza et al. (2017)   |
| Structure                   | Ducoux et al. (2019)    |
| Regional Structure          | De Felipe et al. (2018) |
| Gravimetry                  | Pedreira et al. (2003)  |
| Petrophysics/Paleomagnetism | Llamas et al. (2017)    |



IBERIAN  
EVAPORITE  
STRUCTURE  
DATABASE