

Liendo

ID #003

SUMARIZED INDEX CARD

Downloaded from Iberian Evaporite Structure DataBase

GENERAL INFORMATION

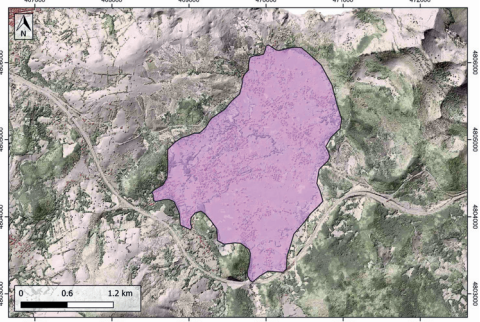
Structure type	Evaporite Diapir
Deformed/Undeformed	Deformed
Geological Setting	Basque-Cantabrian Basin, Cantabrian Block
Outcropping/buried	Outcropping
Evaporite unit/s name	Keuper facies
Evaporite unit/s age	Carnian-Rhaetian (Upper Triassic)
Evaporite unit/s origin	Marine
Classif. (Hudec and Jackson, 2009)	Ductile piercement
Classif. (Jackson and Talbot, 1986)	Salt pillow
Other comments	-

LOCATION



SHAPE AND SUB-SURFACE STRUCTURE

Evaporite unit/s composition	Marlstone-Gypsum-Anhydrite-Claystonestone
Post-evaporite and pre-kinematic unit/s	[Under discussion]
Syn-kinematic unit/s	[Under discussion]
Post-kinematic unit/s (or post-evaporite desposition when undeformed)	Norian-Rhaetian (ophites) ; Valanginian-Aptian (sandstones); Aptian-Albian (Asón Fm.)
Age of evaporite flow or deformation (when deformed)	late Lower Cretaceous to Miocene
Flow or deforming triggering mechanisms	Mesozoic extensional regime
Halokinetic structures	Joints / Faults / Anticline folding

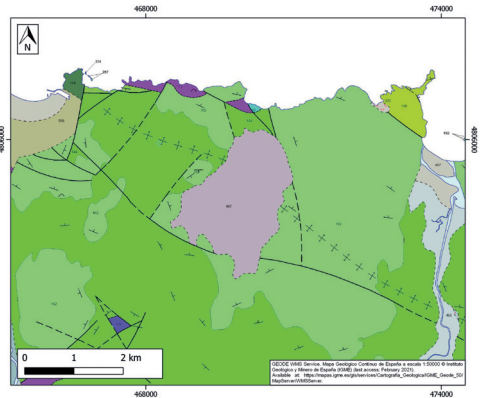


SUB-SURFACE DATA AVAILABILITY

Available borehole data	No
Available seismic data	Yes



GEOLOGY (GEODE IGME)



MAIN REFERENCES

Stratigraphy	Badillo (1982)
Regional Stratigraphy	Pedraza et al. (2017)
Structure	López-Horgue (2000)
Regional Structure	García-Mondéjar et al. (2005)
Gravimetry	nd
Petrophysics/Paleomagnetism	Llamos et al. (2017)



IBERIAN
EVAPORITE
STRUCTURE
DATABASE