

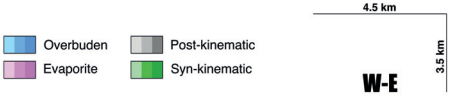
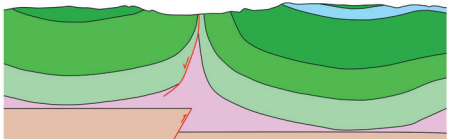
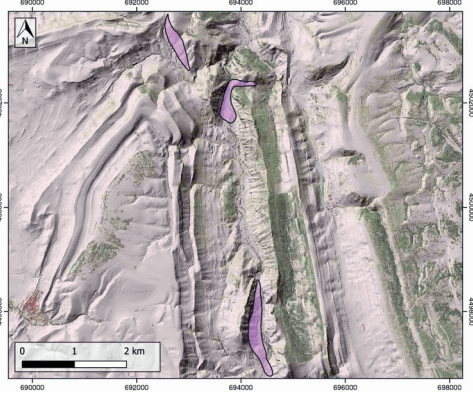
GENERAL INFORMATION

Structure type	Evaporite-cored anticline
Deformed/Undeformed	Deformed
Geological Setting	Iberian Range, Maestrat Basin
Outcropping/buried	Partially Buried
Evaporite unit/s name	Keuper facies
Evaporite unit/s age	Carnian-Rhaetian (Upper Triassic)
Evaporite unit/s origin	Marine
Classif. (Hudec and Jackson, 2009)	Passive piercement
Classif. (Jackson and Talbot, 1986)	Salt anticline, Salt wall, Welded
Other comments	Welded near the surface (see cross-section). Halokinesis and growing stages reinterpreted by Vergés et al. (2020) and considered in this work.

LOCATION



SHAPE AND SUB-SURFACE STRUCTURE



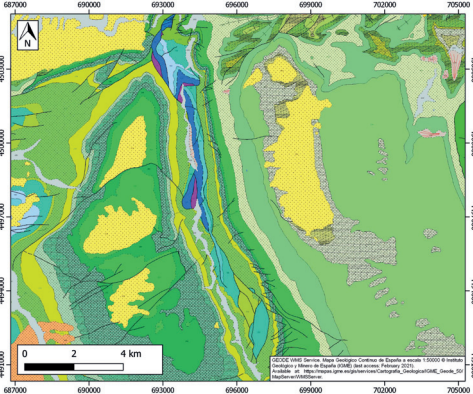
SUB-SURFACE DATA AVAILABILITY

Available borehole data	Yes
Available seismic data	No

MAIN REFERENCES

Stratigraphy	Embry et al. (2010)
Regional Stratigraphy	Vergés et al. (2020)
Structure	Vergés et al. (2020)
Regional Structure	Liesa et al. (2018)
Gravimetry	Ayala et al. (2016)
Petrophysics/Paleomagnetism	-

GEOLOGY (GEODE IGME)



IBERIAN
EVAPORITE
STRUCTURE
DATABASE