

Montblanc-Vimbodí

ID #119

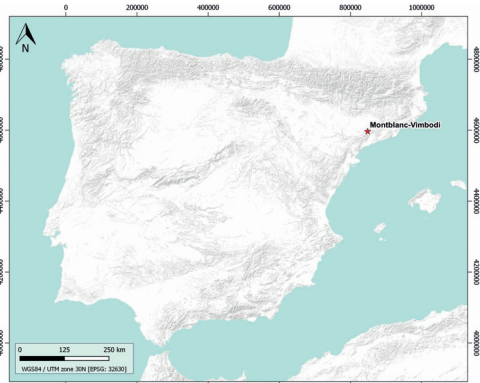
SUMARIZED INDEX CARD

Downloaded from Iberian Evaporite Structure DataBase

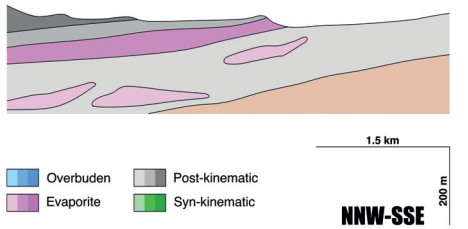
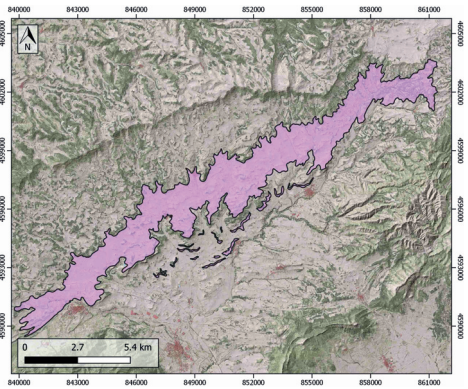
GENERAL INFORMATION

Structure type	Evaporite body
Deformed/Undeformed	Undeformed
Geological Setting	Ebro foreland basin, Southeastern Domain
Outcropping/buried	Outcropping
Evaporite unit/s name	Talavera Fm., Valldeperes, Pira, Rauric and Santa Coloma Fms.
Evaporite unit/s age	Bartonian (Paleogene), Stampian (Paleogene)
Evaporite unit/s origin	Continental
Classif. (Hudec and Jackson, 2009)	No diapirism
Classif. (Jackson and Talbot, 1986)	No diapirism
Other comments	Sedimentation coeval to Paleogene compression and development of NNW-verging folds. Diagenetic cycle: deposition of primary gypsum; transformation into anhydrite during burial; and anhydrite hydration into secondary gypsum during exhumation. Gypsiferous lithofacies preserved as secondary gypsum.

LOCATION



SHAPE AND SUB-SURFACE STRUCTURE



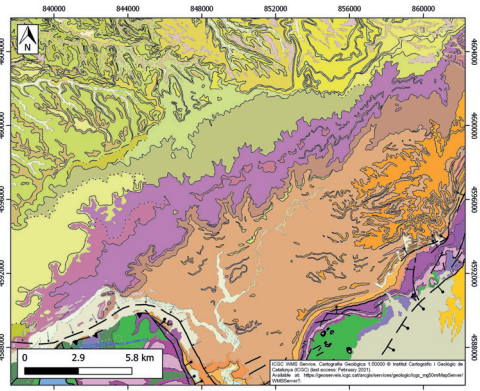
SUB-SURFACE DATA AVAILABILITY

Available borehole data	Yes
Available seismic data	No

MAIN REFERENCES

Stratigraphy	Ortí et al. (2007)
Regional Stratigraphy	Ortí et al. (2007)
Structure	Vergés et al. (1998)
Regional Structure	Anadón et al. (1985)
Gravimetry	Guinea et al. (2010)
Petrophysics/Paleomagnetism	Costa (2011)

GEOLOGY (GEODE IGME)



IBERIAN
EVAPORITE
STRUCTURE
DATABASE