

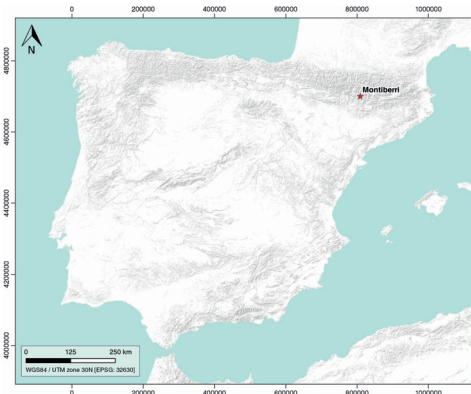
# Montiberri

ID #043

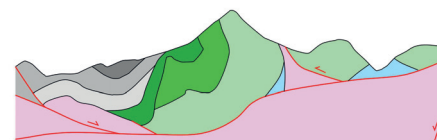
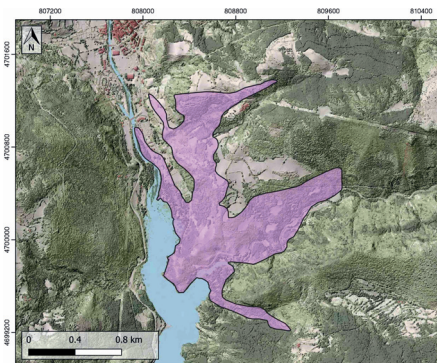
## GENERAL INFORMATION

|                                     |  |
|-------------------------------------|--|
| Structure type                      | Evaporite Diapir   |
| Deformed/Undeformed                 | Deformed   |
| Geological Setting                  | South Pyrenees Central Unit, Nogueres zone   |
| Outcropping/buried                  | Outcropping  |
| Evaporite unit/s name               | El Pont de Suert Fm.   |
| Evaporite unit/s age                | Upper Anisian and Carnian-Rhaetian (Middle-Upper Triassic)   |
| Evaporite unit/s origin             | Marine   |
| Classif. (Hudec and Jackson, 2009)  | Passive piercement   |
| Classif. (Jackson and Talbot, 1986) | Salt roller, welded  |
| Other comments                      | Post-late Santonian compressional overprinting: weld formation and partial downward salt flow into the source layer. |

## LOCATION



## SHAPE AND SUB-SURFACE STRUCTURE



## STRATIGRAPHY AND STRUCTURE

|  |  |
|--|--|
| Evaporite unit/s composition   | Shale-Marlstone-Gypsum-Halite-Anhydrite                      |
| Post-evaporite and pre-kinematic unit/s                              | Lower Jurassic (limestones and dolostones)                   |
| Syn-kinematic unit/s   | Lower Cretaceous (limestones) / Albian (grainstones)         |
| Post-kinematic unit/s (or post-evaporite deposition when undeformed) | Cenomanian-Turonian / Turonian-Campanian / Quaternary        |
| Age of evaporite flow or deformation (when deformed)                 | Upper Jurassic to Lower Cretaceous                           |
| Flow or deforming triggering mechanisms                              | Development of the Montiberri and Northern Faïda depocenters |
| Halokinetic structures   | Progressive unconformities / Normal faults                   |

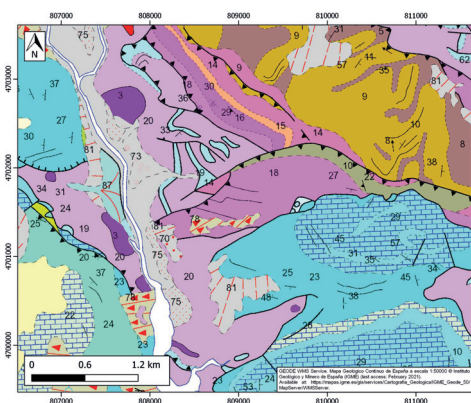
## SUB-SURFACE DATA AVAILABILITY

|                         |    |
|-------------------------|----|
| Available borehole data | No |
| Available seismic data  | No |

## MAIN REFERENCES

|                             |                               |
|-----------------------------|-------------------------------|
| Stratigraphy                | Martín-Chivelet et al. (2019) |
| Regional Stratigraphy       | Saura et al. (2016)           |
| Structure                   | Dalton (2019)                 |
| Regional Structure          | Muñoz et al. (2018)           |
| Gravimetry                  | Pedraza et al. (2017)         |
| Petrophysics/Paleomagnetism | Santolaria et al. (2017)      |

## GEOLOGY (GEODE IGME)



IBERIAN  
EVAPORITE  
STRUCTURE  
DATABASE