

GENERAL INFORMATION

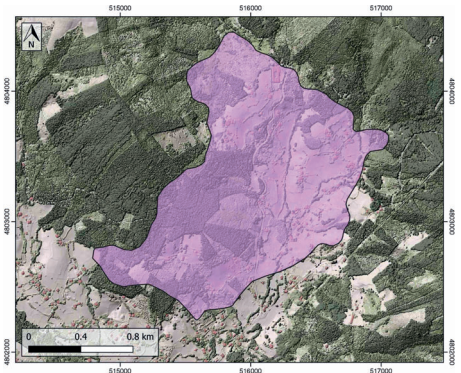
Structure type	Evaporite Diapir
Deformed/Undeformed	Deformed
Geological Setting	Basque-Cantabrian Basin, Basque Arc
Outcropping/buried	Outcropping
Evaporite unit/s name	Keuper facies
Evaporite unit/s age	Carnian-Rhaetian (Upper Triassic)
Evaporite unit/s origin	Marine
Classif. (Hudec and Jackson, 2009)	Passive piercement
Classif. (Jackson and Talbot, 1986)	Salt wall
Other comments	-

LOCATION



SHAPE AND SUB-SURFACE STRUCTURE

Evaporite unit/s composition	Claystone-Gypsum-Halite-Anhydrite-Ophites
Post-evaporite and pre-kinematic unit/s	Jurassic (dolostones, marls and oolitic limestones) and Neocomian (limestones, marlstones and sandstones)
Syn-kinematic unit/s	Aptian-middle Albian (Urgonian Group; Punta del Bakio Unit) / Upper Albian-lower Cenomanian (Deva Fm.; Cabo Villano Fm.; Plenzia Fm.)
Post-kinematic unit/s (or post-evaporite desposition when undeformed)	Quaternary (alluvial and colluvial detrital deposits)
Age of evaporite flow or deformation (when deformed)	Middle Cretaceous
Flow or deforming triggering mechanisms	High angle regional extensional faults
Halokinetic structures	Progressive unconformities / Normal high-angle faults / joints / thickness variations



SUB-SURFACE DATA AVAILABILITY

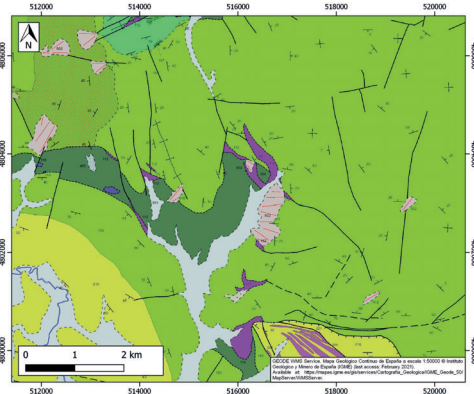
Available borehole data	Yes
Available seismic data	Yes



MAIN REFERENCES

Stratigraphy	Cuevas and Tubía (1985)
Regional Stratigraphy	Pedraza et al. (2017)
Structure	Roca et al. (2020)
Regional Structure	Soto et al. (2017)
Gravimetry	Nettleton (1968)
Petrophysics/Paleomagnetism	Soto et al. (2017)

GEOLOGY (GEODE IGME)



IBERIAN
EVAPORITE
STRUCTURE
DATABASE