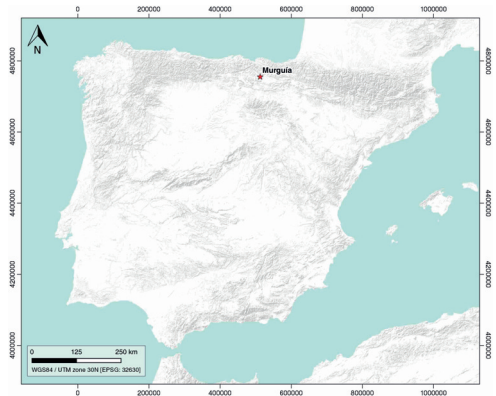


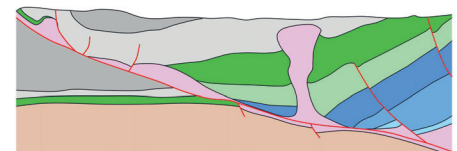
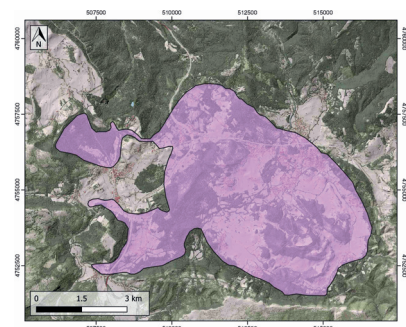
GENERAL INFORMATION

Structure type	Evaporite Diapir
Deformed/Undeformed	Deformed
Geological Setting	Basque-Cantabrian Basin, Navarra-Álava trough
Outcropping/buried	Outcropping
Evaporite unit/s name	Keuper facies
Evaporite unit/s age	Carnian-Rhaetian (Upper Triassic)
Evaporite unit/s origin	Marine
Classif. (Hudec and Jackson, 2009)	Ductile piercement
Classif. (Jackson and Talbot, 1986)	Salt stock
Other comments	Northwest-southeast alignment of the Murguía, Orduña, and Villasana de Mena diapirs

LOCATION



SHAPE AND SUB-SURFACE STRUCTURE



STRATIGRAPHY AND STRUCTURE

Evaporite unit/s composition	Gypsum-Halite-Anhydrite-Claystone-Ophites
Post-evaporite and pre-kinematic unit/s	Jurassic (dolomitic limestones, dolomitic breccias and laminated dolostones)
Syn-kinematic unit/s	Albian (Valmaseda Fm.)
Post-kinematic unit/s (or post-evaporite desposition when undeformed)	Lower Oligocene (conglomerates and Sandstones) and Quaternary
Age of evaporite flow or deformation (when deformed)	Paleocene (main stage), Middle Cretaceous (early pillow-stage piercement)
Flow or deforming triggering mechanisms	Mesozoic extensional regime (early stage) and Alpine compression (main stage)
Halokinetic structures	Radial joints and faults / Syncline folding

SUB-SURFACE DATA AVAILABILITY

Available borehole data	Yes
Available seismic data	Yes

MAIN REFERENCES

Stratigraphy	Perona (2016)
Regional Stratigraphy	Perona (2016)
Structure	Perona et al. (2018)
Regional Structure	García-Mondéjar et al. (1996)
Gravimetry	Nettleton (1968)
Petrophysics/Paleomagnetism	Llamas et al. (2017)

GEOLOGY (GEODE IGME)

