

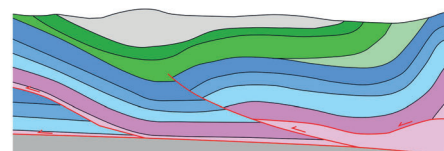
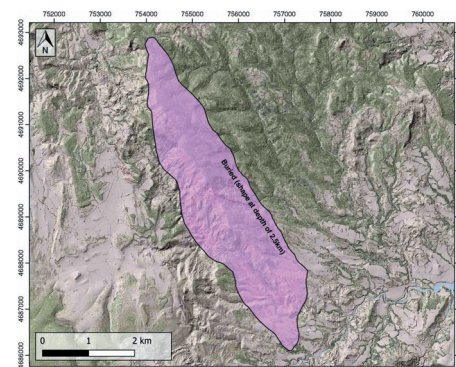
GENERAL INFORMATION

Structure type	Evaporite-cored anticline
Deformed/Undeformed	Deformed
Geological Setting	Southern Pyrenees, Graus-Tremp Basin
Outcropping/buried	Buried
Evaporite unit/s name	El Pont de Suert Fm.
Evaporite unit/s age	Upper Anisian and Carnian-Rhaetian (Middle-Upper Triassic)
Evaporite unit/s origin	Marine
Classif. (Hudec and Jackson, 2009)	Ductile piercement, Thrust piercement
Classif. (Jackson and Talbot, 1986)	Salt anticline
Other comments	Originated by a clockwise rotation of the structures as a consequence of the differential and larger southern displacement of the South Pyrenean thrust sheets located further to the east where the Triassic evaporitic section was thicker (see Cámara, 2017).

LOCATION



SHAPE AND SUB-SURFACE STRUCTURE



STRATIGRAPHY AND STRUCTURE

Evaporite unit/s composition	Shale-Gypsum-Anhydrite-Ophites
Post-evaporite and pre-kinematic unit/s	Upper Cenomanian-Lower Santonian («Calcaires des Canyons», limestones) ; Upper Santonian-Maastrichtian (limestones and calcarenites) ; Palaeocene (Garumnian, shales, mudstones, limestones) ; Illeridian (Alveolinid Limestone) ; Lower Eocene (Illaris, Metils, and Yeba Fms., marlstones and limestones)
Syn-kinematic unit/s	Early-Middle Lutetian (San Vicente Fm., shales, marlstones, breccias) ; Middle-Late Lutetian (Sobrarbe Fm., mudstones, shales, sandstones) ; Late Lutetian-Bartonian (Escanilla Fm., sandstones)
Post-kinematic unit/s (or post-evaporite desposition when undeformed)	Priabonian-Oligocene (Campodarbe Fm.) ; Oligocene (Graus Fm.) ; Quaternary
Age of evaporite flow or deformation (when deformed)	Eocene
Flow or deforming triggering mechanisms	Clockwise rotation of regional structures
Halokinetic structures	Thrust faults / thickness variations / joints / progressive unconformities

SUB-SURFACE DATA AVAILABILITY

Available borehole data	Yes
Available seismic data	Yes



MAIN REFERENCES

Stratigraphy	Bayliss and Pickering (2015)
Regional Stratigraphy	Santolaria et al. (2020)
Structure	Muñoz et al. (2013)
Regional Structure	Muñoz et al. (2018)
Gravimetry	Calvín et al. (2018)
Petrophysics/Paleomagnetics	Rodríguez-Pintó et al. (2016)

GEOLOGY (GEODE IGME)

