

# Pancrudo

ID #094

## SUMARIZED INDEX CARD

Downloaded from Iberian Evaporite Structure DataBase

### GENERAL INFORMATION

Structure type	Evaporite Diapir
Deformed/Undeformed	Deformed
Geological Setting	Iberian Range, Maestrat Basin
Outcropping/buried	Outcropping
Evaporite unit/s name	Keuper facies
Evaporite unit/s age	Carnian-Rhaetian (Upper Triassic)
Evaporite unit/s origin	Marine
Classif. (Hudec and Jackson, 2009)	Thrust piercement
Classif. (Jackson and Talbot, 1986)	Salt wall
Other comments	NW continuation of the Cañada-Vellida (ID #093) salt wall. Halokinesis and growing stages reinterpreted by Vergés et al. (2020) and considered in this work.

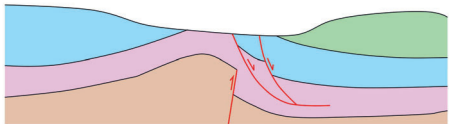
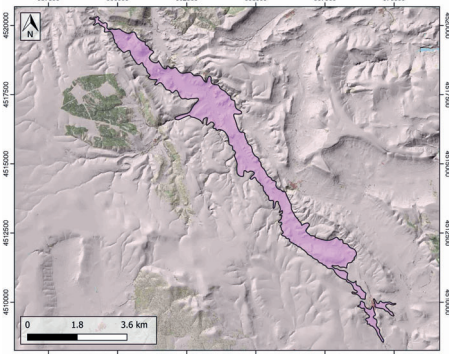
### LOCATION



### SHAPE AND SUB-SURFACE STRUCTURE

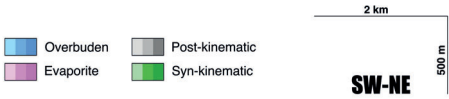
### STRATIGRAPHY AND STRUCTURE

Evaporite unit/s composition	Shale-Gypsum-Anhydrite
Syn-kinematic unit/s	Uppermost Jurassic (Arzobispo Fm., limestones and sandy limestones) ; Hauterivian (El Castellar Fm., limestones and sandstones) ; Barremian (Camarillas, Artoles, Morella and Xert Fms.) ; Early Aptian (Forcall and Villaroya de los Pinares Fms., marlstones, limestones and nodular limestones) ; Late Aptian (Benassal Fm.) Albian (Escucha and Utrillas Fms.)
Post-evaporite and pre-kinematic unit/s	Early Jurassic (Cortes de Tajuña and Cuevas Labradas Fm., limestones and dolostones) ; Late Jurassic (Loriguilla and Higuieruelas Fms., limestones and sandstones)
Post-kinematic unit/s (or post-evaporite desposition when undeformed)	Late Oligocene-Miocene (conglomerates, sandstones and shales), Quaternary
Age of evaporite flow or deformation (when deformed)	Lower Cretaceous, Upper Jurassic
Flow or deforming triggering mechanisms	Late Jurassic-Early Cretaceous rifting and alpine compression
Halokinetic structures	Thickness variations / progressive unconformities / overturned flanks



### SUB-SURFACE DATA AVAILABILITY

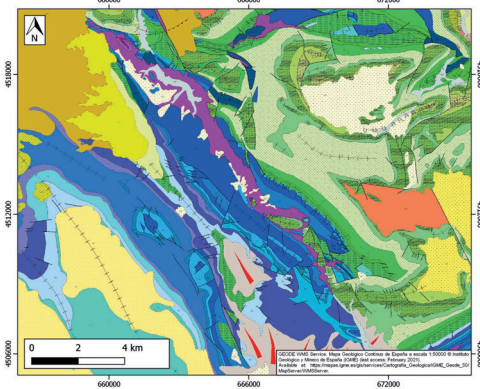
Available borehole data	No
Available seismic data	No



### MAIN REFERENCES

Stratigraphy	Bover-Arnal et al. (2016)
Regional Stratigraphy	Vergés et al. (2020)
Structure	Salas and Guimerà (1996)
Regional Structure	Nebot and Guimerà (2018)
Gravimetry	Ayala et al. (2016)
Petrophysics/Paleomagnetism	-

### GEOLOGY (GEODE IGME)



IBERIAN  
EVAPORITE  
STRUCTURE  
DATABASE