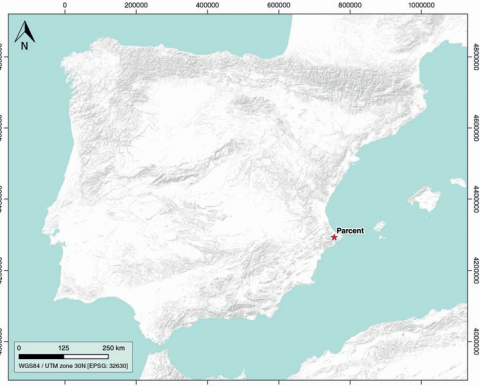


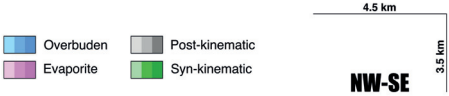
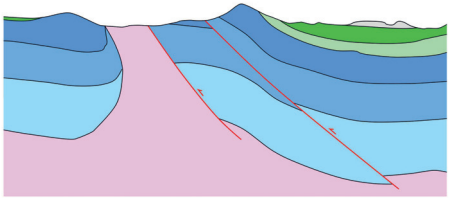
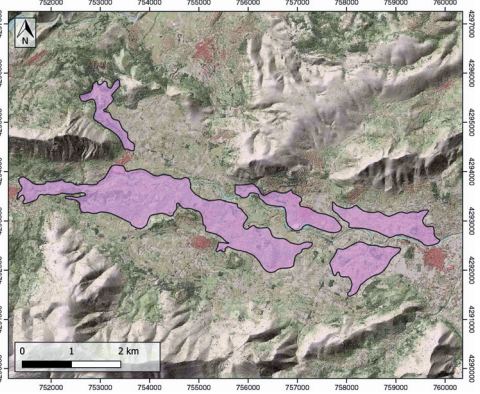
GENERAL INFORMATION

Structure type	Evaporite Diapir
Deformed/Undeformed	Deformed
Geological Setting	Betic system, Pre-Betic cordillera
Outcropping/buried	Outcropping
Evaporite unit/s name	Keuper Facies
Evaporite unit/s age	Carnian-Rhaetian (Upper Triassic)
Evaporite unit/s origin	Marine
Classif. (Hudec and Jackson, 2009)	Passive piercement, thrust piercement
Classif. (Jackson and Talbot, 1986)	Salt wall
Other comments	Parcent and Altea were pre-existing near-surface diapirs, controlled by Mesozoic normal faults latterly squeezed during late Oligocene-Tortonian contraction. Extrusion of the Parcent diapir driven by squeezing of a near-surface diapir at the front of Carrascal anticline, producing a sharply overturned northern limb

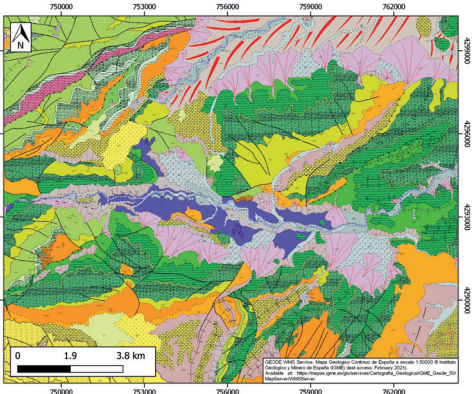
LOCATION



SHAPE AND SUB-SURFACE STRUCTURE



GEOLOGY (GEODE IGME)



STRATIGRAPHY AND STRUCTURE

Evaporite unit/s composition	Gypsum-Anhydrite-Mudstone-Sandstone
Post-evaporite and pre-kinematic unit/s	Lower Jurassic (limestones) ; Barremian-Albian (limestones, marls, micritic limestones) ; Upper Cretaceous (tabular limestones, marly limestones, calcarenites, dolostones)
Syn-kinematic unit/s	Eocene (marlstones, marly limestones, limestones) ; Late Oligocene (limestones, carbonate breccia) ; Aquitanian-Tortonian (shales, breccias, carbonate breccia, sandstone, calcariete)
Post-kinematic unit/s (or post-evaporite deposition when undeformed)	Pliocene (conglomerates with carbonate matrix), Quaternary
Age of evaporite flow or deformation (when deformed)	Eocene, Oligocene to Miocene
Flow or deforming triggering mechanisms	Differential loading (early stage) and squeezing of the previous near-surface diapir (late stage)
Halokinetic structures	Reverse faults / anticline-syncline folding / progressive unconformities

SUB-SURFACE DATA AVAILABILITY

Available borehole data	Yes
Available seismic data	Yes

MAIN REFERENCES

Stratigraphy	Cater (1987)
Regional Stratigraphy	Martín-Martín et al. (2020)
Structure	Pedraza et al. (2014)
Regional Structure	del Olmo et al. (2015)
Gravimetry	Ayala et al. (2016)
Petrophysics/Paleomagnetism	nd



IBERIAN  
EVAPORITE  
STRUCTURE  
DATABASE