

# Peñaroya-Cabigordo

ID #083

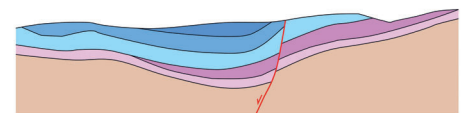
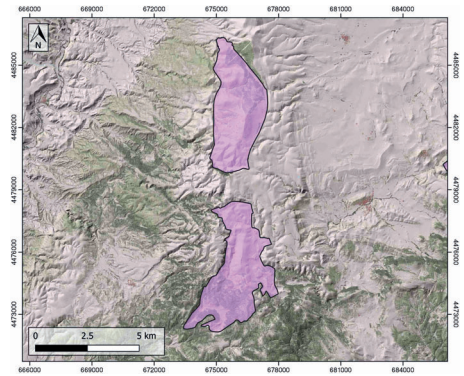
## GENERAL INFORMATION

Structure type	Evaporite body
Deformed/Undeformed	Undeformed
Geological Setting	Iberian Range, Teruel-Jiloca Graben
Outcropping/buried	Outcropping
Evaporite unit/s name	Keuper facies, Middle Muschelkalk facies
Evaporite unit/s age	Upper Anisian and Carnian-Rhaetian (Middle-Upper Triassic)
Evaporite unit/s origin	Marine
Classif. (Hudec and Jackson, 2009)	No diapirism
Classif. (Jackson and Talbot, 1986)	No diapirism
Other comments	-

## LOCATION



## SHAPE AND SUB-SURFACE STRUCTURE



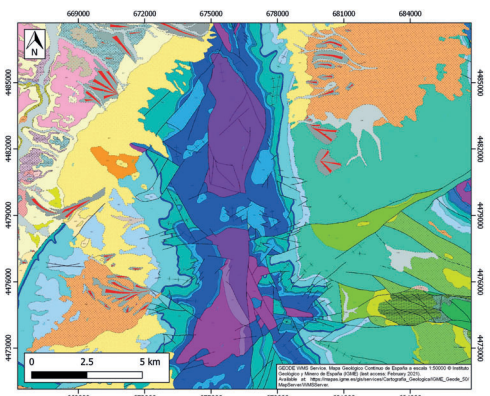
## STRATIGRAPHY AND STRUCTURE

Evaporite unit/s composition	Shale-Gypsum-Anhydrite-Ophites
Post-evaporite and pre-kinematic unit/s	-
Syn-kinematic unit/s	-
Post-kinematic unit/s (or post-evaporite deposition when undeformed)	Jurassic ; Lower Cretaceous ; Paleogene ; Quaternary
Age of evaporite flow or deformation (when deformed)	Undeformed
Flow or deforming triggering mechanisms	-
Halokinetic structures	-

## SUB-SURFACE DATA AVAILABILITY

Available borehole data	No
Available seismic data	Yes

## GEOLOGY (GEODE IGME)



## MAIN REFERENCES

Stratigraphy	Ezquerro (2017)
Regional Stratigraphy	Ezquerro et al. (2012)
Structure	Ezquerro et al. (2020)
Regional Structure	Liesa et al. (2019)
Gravimetry	Ayala et al. (2016)
Petrophysics/Paleomagnetism	Ezquerro et al. (2016)



IBERIAN  
EVAPORITE  
STRUCTURE  
DATABASE