

# Pinoso

ID #004

## SUMARIZED INDEX CARD

Downloaded from Iberian Evaporite Structure DataBase

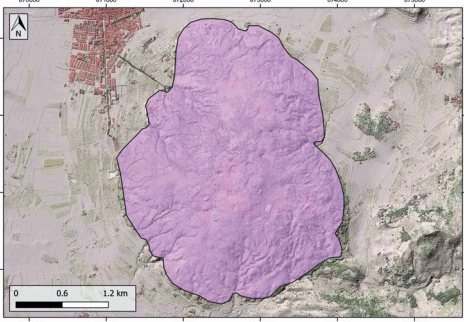
### GENERAL INFORMATION

|                                     |  |
|-------------------------------------|--|
| Structure type                      | Evaporite Diapir   |
| Deformed/Undeformed                 | Deformed   |
| Geological Setting                  | Betic system, Pre-Betic cordillera   |
| Outcropping/buried                  | Outcropping  |
| Evaporite unit/s name               | Keuper facies  |
| Evaporite unit/s age                | Carnian-Rhaetian (Upper Triassic)  |
| Evaporite unit/s origin             | Marine   |
| Classif. (Hudec and Jackson, 2009)  | Ductile piercement   |
| Classif. (Jackson and Talbot, 1986) | Salt pillow  |
| Other comments                      | The onset of diapirism is unknown.<br>Human-induced karstification processes reported by Rodríguez-Estrella and Pulido-Bosch (2010). |

### LOCATION



### SHAPE AND SUB-SURFACE STRUCTURE



### STRATIGRAPHY AND STRUCTURE

|   |  |
|---|--|
| Evaporite unit/s composition  | Claystonestone-Marlstone-Gypsum-Halite                           |
| Post-evaporite and pre-kinematic unit/s                               | Jurassic-Cretaceous carbonate cover                              |
| Syn-kinematic unit/s  | Miocene to Quaternary (alluvial and colluvial detrital deposits) |
| Post-kinematic unit/s (or post-evaporite desposition when undeformed) | Quaternary (alluvial and colluvial detrital deposits)            |
| Age of evaporite flow or deformation (when deformed)                  | Quaternary / Active now(?)                                       |
| Flow or deforming triggering mechanisms                               | Quaternary fault activity  |
| Halokinetic structures  | Normal faults / radial joints / Progressive unconformities       |

### SUB-SURFACE DATA AVAILABILITY

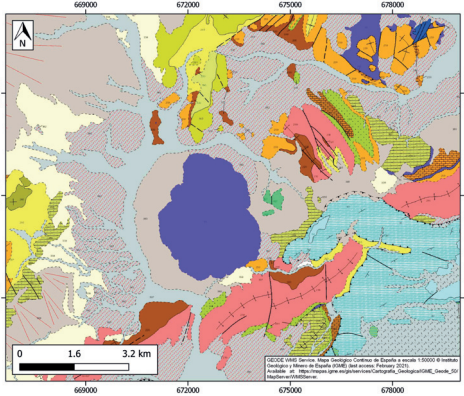
|                         |     |
|-------------------------|-----|
| Available borehole data | Yes |
| Available seismic data  | Yes |



### MAIN REFERENCES

|                             |  |
|-----------------------------|--|
| Stratigraphy                | Navarro-Hervás and Rodríguez-Estrella (1985) |
| Regional Stratigraphy       | Escosa et al. (2018)                         |
| Structure                   | Navarro-Hervás and Rodríguez-Estrella (1985) |
| Regional Structure          | Roca et al. (2006)                           |
| Gravimetry                  | nd   |
| Petrophysics/Paleomagnetism | nd   |

### GEOLOGY (GEODE IGME)



IBERIAN  
EVAPORITE  
STRUCTURE  
DATABASE