

Polientes

ID #036

SUMARIZED INDEX CARD

Downloaded from Iberian Evaporite Structure DataBase

GENERAL INFORMATION

Structure type	Evaporite-cored anticline
Deformed/Undeformed	Deformed
Geological Setting	Basque-Cantabrian Basin, Burgalesa Platform
Outcropping/buried	Buried
Evaporite unit/s name	Keuper facies
Evaporite unit/s age	Carnian-Rhaetian (Upper Triassic)
Evaporite unit/s origin	Marine
Classif. (Hudec and Jackson, 2009)	No diapirism
Classif. (Jackson and Talbot, 1986)	No diapirism
Other comments	The Ayoluengo oil field is located over a Late Jurassic salt anticline with approximately NE-SW axial orientation, close to the Polientes evaporite structure

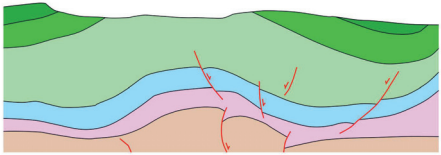
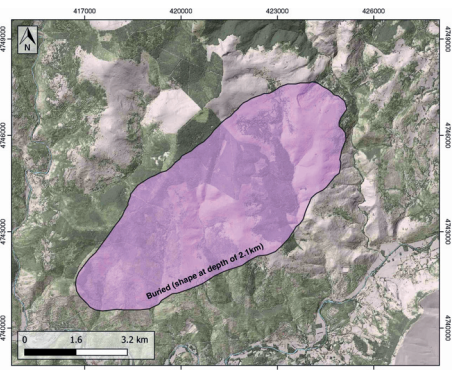
LOCATION



SHAPE AND SUB-SURFACE STRUCTURE

STRATIGRAPHY AND STRUCTURE

Evaporite unit/s composition	Gypsum-Marlstones-Claystone-Shale
Post-evaporite and pre-kinematic unit/s	-
Syn-kinematic unit/s	-
Post-kinematic unit/s (or post-evaporite desposition when undeformed)	Jurassic; Late Jurassic – Early Cretaceous; Lower-Middle Cretaceous; Late Cretaceous
Age of evaporite flow or deformation (when deformed)	-
Flow or deforming triggering mechanisms	-
Halokinetic structures	-

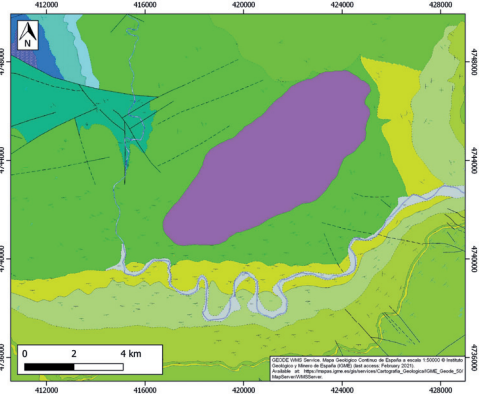


SUB-SURFACE DATA AVAILABILITY

Available borehole data	Yes
Available seismic data	Yes



GEOLOGY (GEODE IGME)



MAIN REFERENCES

Stratigraphy	Martín-Chivelet et al. (2019)
Regional Stratigraphy	Pedraza et al. (2017)
Structure	Carola et al. (2015)
Regional Structure	Cámara (2017)
Gravimetry	Ayala et al. (2016)
Petrophysics/Paleomagnetism	Soto et al. (2008)



IBERIAN
EVAPORITE
STRUCTURE
DATABASE