

Reinosa

ID #037

GENERAL INFORMATION

Structure type	Evaporite Diapir
Deformed/Undeformed	Deformed
Geological Setting	Basque-Cantabrian Basin, Burgalesa Platform
Outcropping/buried	Outcropping
Evaporite unit/s name	Keuper facies
Evaporite unit/s age	Carnian-Rhaetian (Upper Triassic)
Evaporite unit/s origin	Marine
Classif. (Hudec and Jackson, 2009)	Passive piercement
Classif. (Jackson and Talbot, 1986)	Salt wall
Other comments	Series of contractional salt structures aligned along the N-S Burgalesa platform boundary: Aguilar, Reinosa and Pas evaporite structures (from south to north)

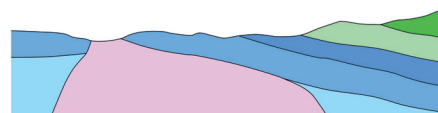
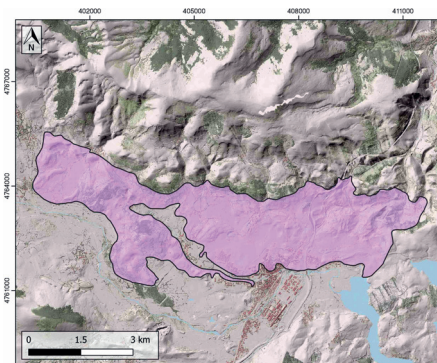
LOCATION



SHAPE AND SUB-SURFACE STRUCTURE

STRATIGRAPHY AND STRUCTURE

Evaporite unit/s composition	Gypsum-Halite-Anhydrite-Shales
Post-evaporite and pre-kinematic unit/s	Jurassic (dolostones, marls and oolitic limestones)
Syn-kinematic unit/s	Barremian (Weald facies, limestones, clays and sandstones) / Aptian – Albian (limestones, marls, sandstones and lutites)
Post-kinematic unit/s (or post-evaporite deposition when undeformed)	Quaternary (alluvial and colluvial detrital deposits)
Age of evaporite flow or deformation (when deformed)	Lower Cretaceous
Flow or deforming triggering mechanisms	Rumaceo normal fault
Halokinetic structures	Normal high-angle faults / joints

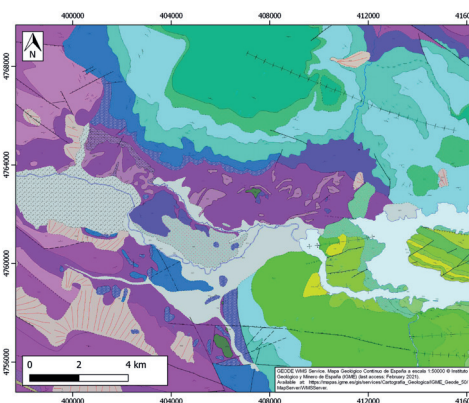


SUB-SURFACE DATA AVAILABILITY

Available borehole data	Yes
Available seismic data	Yes



GEOLOGY (GEODE IGME)



MAIN REFERENCES

Stratigraphy	Carola et al. (2015)
Regional Stratigraphy	Pujalte et al. (1986)
Structure	Tavani (2012)
Regional Structure	Tavani and Granado (2015)
Gravimetry	Pedraza et al. (2017)
Petrophysics/Paleomagnetism	Soto et al. (2008)



IBERIAN
EVAPORITE
STRUCTURE
DATABASE