

# Ribafrecha

ID #127

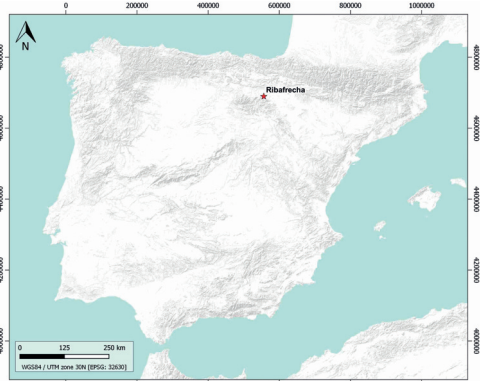
## SUMARIZED INDEX CARD

Downloaded from Iberian Evaporite Structure DataBase

### GENERAL INFORMATION

Structure type	Evaporite body
Deformed/Undeformed	Undeformed
Geological Setting	Ebro foreland basin, Northwestern Domain
Outcropping/buried	Outcropping
Evaporite unit/s name	Ribafrecha Gypsum Unit
Evaporite unit/s age	Late Aquitanian-Early Burdigalian (Miocene)
Evaporite unit/s origin	Continental
Classif. (Hudec and Jackson, 2009)	No diapirism
Classif. (Jackson and Talbot, 1986)	No diapirism
Other comments	Together with Monteagudo and Grávalos gypsum units, they represent the last evaporite sedimentation in the Navarra-La Rioja sector. Contemporary to the Zaragoza central saline lake. Deposited under lacustrine marginal, low salinity environments. Mega nodular gypsum facies reported by Ortí et al. (2012).

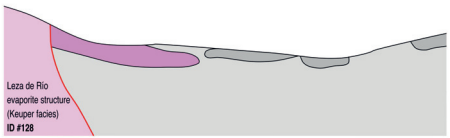
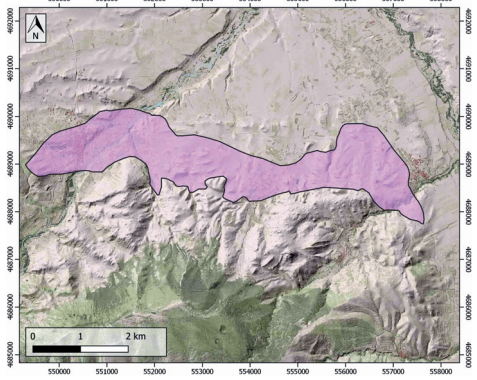
### LOCATION



### SHAPE AND SUB-SURFACE STRUCTURE

### STRATIGRAPHY AND STRUCTURE

Evaporite unit/s composition	Primary gypsum-Secondary gypsum
Syn-kinematic unit/s	-
Post-evaporite and pre-kinematic unit/s	-
Post-kinematic unit/s (or post-evaporite desposition when undeformed)	Quaternary (alluvial and colluvial detrital deposits)
Age of evaporite flow or deformation (when deformed)	Undeformed
Flow or deforming triggering mechanisms	-
Halokinetic structures	-



### SUB-SURFACE DATA AVAILABILITY

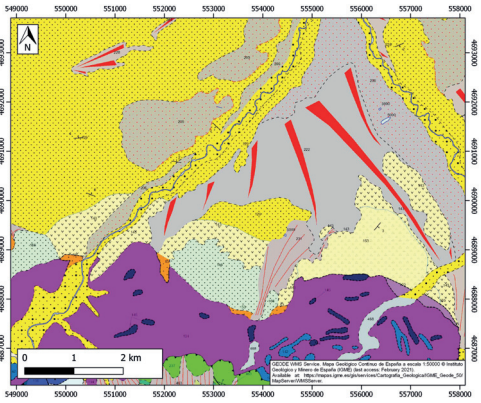
Available borehole data	Yes
Available seismic data	Yes



### MAIN REFERENCES

Stratigraphy	Salvany and Munoz (1989)
Regional Stratigraphy	Ortí (1990)
Structure	Ortí (1990)
Regional Structure	Casas-Sainz and Berdiel (1999)
Gravimetry	Guinea et al. (2014)
Petrophysics/Paleomagnetism	nd

### GEOLOGY (GEODE IGME)



IBERIAN  
EVAPORITE  
STRUCTURE  
DATABASE