

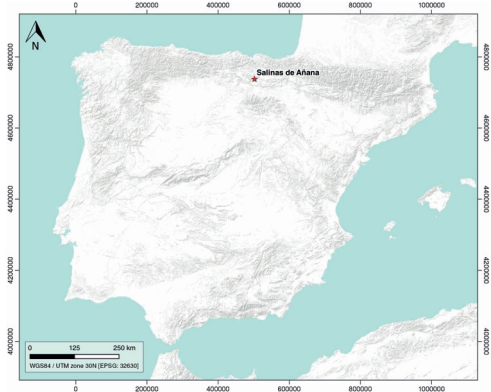
Salinas de Añana

ID #017

GENERAL INFORMATION

Structure type	Evaporite Diapir
Deformed/Undeformed	Deformed
Geological Setting	Basque-Cantabrian Basin, Navarra-Álava trough
Outcropping/buried	Outcropping
Evaporite unit/s name	Keuper facies
Evaporite unit/s age	Carnian-Rhaetian (Upper Triassic)
Evaporite unit/s origin	Marine
Classif. (Hudec and Jackson, 2009)	Passive piercement
Classif. (Jackson and Talbot, 1986)	Salt stock
Other comments	-

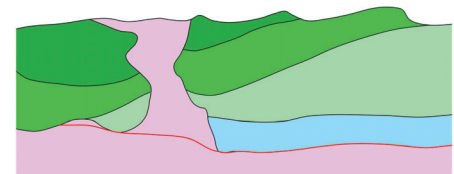
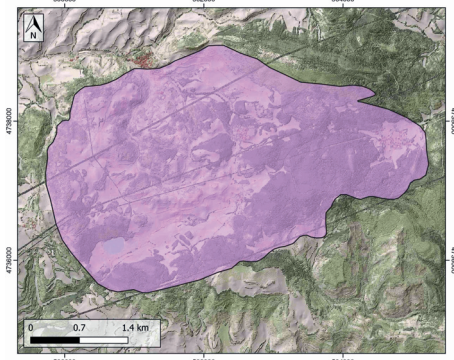
LOCATION



SHAPE AND SUB-SURFACE STRUCTURE

STRATIGRAPHY AND STRUCTURE

Evaporite unit/s composition	Claystonestone-Marlstone-Gypsum
Post-evaporite and pre-kinematic unit/s	Jurassic (limestones and marls) and Lower Cretaceous (clastic deposits)
Syn-kinematic unit/s	Albo-Cenomanian / Cenomanian / Turonian (Gárate Fm.) / Turonian (Zuazo Fm.) / Coniacian / Coniacian-Lower Santonian / Santonian / Lower Miocene (Conglomerates, sandstones and marls)
Post-kinematic unit/s (or post-evaporite deposition when undeformed)	Quaternary (alluvial and colluvial detrital deposits)
Age of evaporite flow or deformation (when deformed)	Aptian to Quaternary
Flow or deforming triggering mechanisms	Sierra de Cantabria thrust fault
Halokinetic structures	Normal Faults / Reverse faults / Progressive unconformities / Hook-type structures



SUB-SURFACE DATA AVAILABILITY

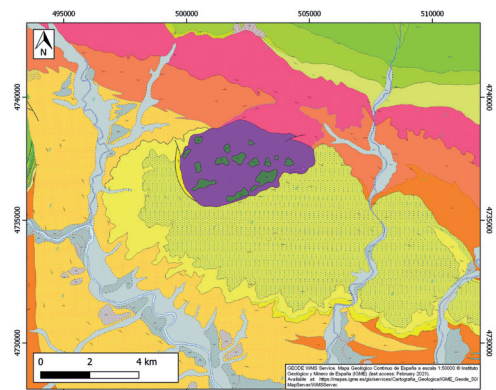
Available borehole data	Yes
Available seismic data	Yes



MAIN REFERENCES

Stratigraphy	Robles (2014)
Regional Stratigraphy	Pedreira et al. (2017)
Structure	Frankovic (2011)
Regional Structure	Rat (1988)
Gravimetry	Pinto et al. (1998)
Petrophysics/Paleomagnetism	Llamas et al. (2017)

GEOLOGY (GEODE IGME)



IBERIAN
EVAPORITE
STRUCTURE
DATABASE