

GENERAL INFORMATION

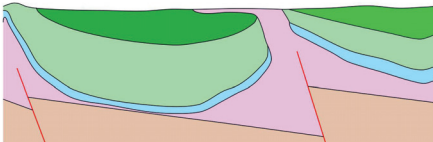
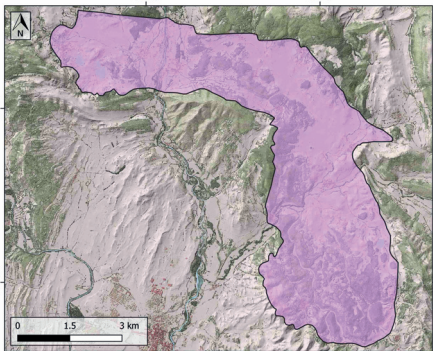
Structure type	Evaporite Diapir
Deformed/Undeformed	Deformed
Geological Setting	Basque-Cantabrian Basin, Navarra-Álava trough
Outcropping/buried	Outcropping
Evaporite unit/s name	Keuper facies
Evaporite unit/s age	Carnian-Rhaetian (Upper Triassic)
Evaporite unit/s origin	Marine
Classif. (Hudec and Jackson, 2009)	Ductile piercement
Classif. (Jackson and Talbot, 1986)	Salt glacier, Salt pillow
Other comments	NW-SE orientation with a southern salt glacier

LOCATION



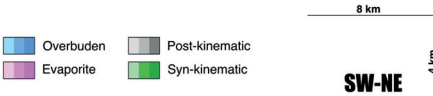
SHAPE AND SUB-SURFACE STRUCTURE

Evaporite unit/s composition	Gypsum-Halite-Anhydrite-Claystone-Ophites
Post-evaporite and pre-kinematic unit/s	Lower Jurassic (dolomitic breccias, limestones and marls)
Syn-kinematic unit/s	Albo-Cenomanian (Valmaseda Fm.) / Cenomanian / Turonian (Gárate Fm.) / Turonian (Zuazo Fm.) / Lower Coniacian (Subijana Fm.) / Palaeocene-Eocene (limestones, clays and marls) / Miocene (sandstones)
Post-kinematic unit/s (or post-evaporite desposition when undeformed)	Quaternary (alluvial and colluvial detrital deposits)
Age of evaporite flow or deformation (when deformed)	Berriasian to Upper Miocene
Flow or deforming triggering mechanisms	Mesozoic extensional regime (early stage) and Alpine compression (late stage)
Halokinetic structures	Syncline-Anticline folding / Normal Faults / Reverse faults / Progressive unconformities



SUB-SURFACE DATA AVAILABILITY

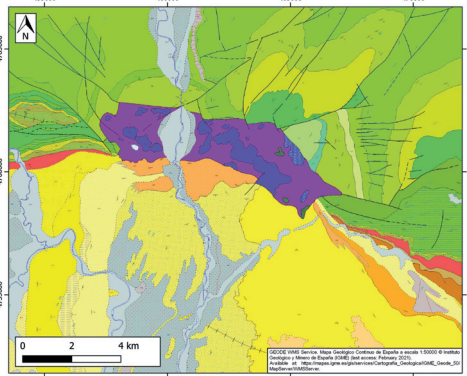
Available borehole data	Yes
Available seismic data	Yes



MAIN REFERENCES

Stratigraphy	Hernaiz-Huerta and Pond (2000)
Regional Stratigraphy	Hernaiz-Huerta and Pond (2000)
Structure	Poprawski and Basile (2018)
Regional Structure	Pedraza et al. (2017)
Gravimetry	Pedraza et al. (2017)
Petrophysics/Paleomagnetism	Llambas et al. (2017)

GEOLOGY (GEODE IGME)



IBERIAN
EVAPORITE
STRUCTURE
DATABASE