

San Fernando

ID #011

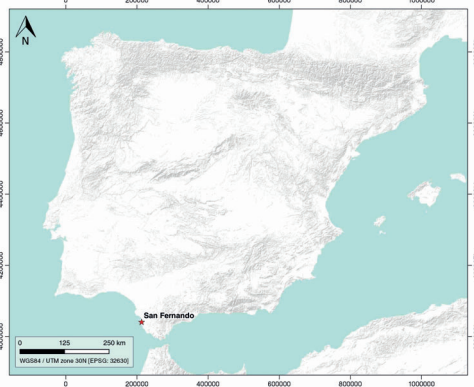
SUMARIZED INDEX CARD

Downloaded from Iberian Evaporite Structure DataBase

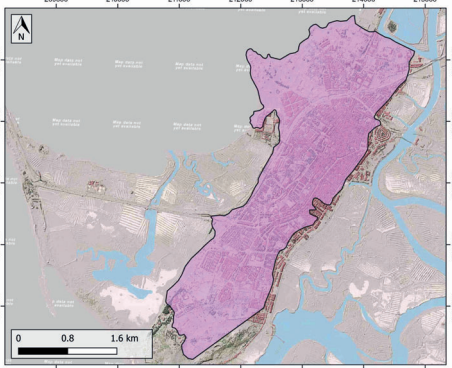
GENERAL INFORMATION

Structure type	Evaporite Diapir
Deformed/Undeformed	Deformed
Geological Setting	Betic system, Guadalquivir Accretionary Complex
Outcropping/buried	Outcropping
Evaporite unit/s name	Keuper facies
Evaporite unit/s age	Carnian-Rhaetian (Upper Triassic)
Evaporite unit/s origin	Marine
Classif. (Hudec and Jackson, 2009)	Passive piercement
Classif. (Jackson and Talbot, 1986)	Salt stock
Other comments	-

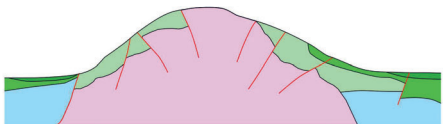
LOCATION



SHAPE AND SUB-SURFACE STRUCTURE



Evaporite unit/s composition	Gypsum-Claystone-Marlstone-Dolomite
Post-evaporite and pre-kinematic unit/s	-
Syn-kinematic unit/s	Plio-Pleistocene sands and conglomerates / Upper Pleistocene beach deposits
Post-kinematic unit/s (or post-evaporite desposition when undeformed)	Quaternary (alluvial and colluvial detrital deposits)
Age of evaporite flow or deformation (when deformed)	Lower-Middle Pleistocene
Flow or deforming triggering mechanisms	Quaternary reverse fault activity
Halokinetic structures	Anticline folding / Reverse faults / joints



SUB-SURFACE DATA AVAILABILITY

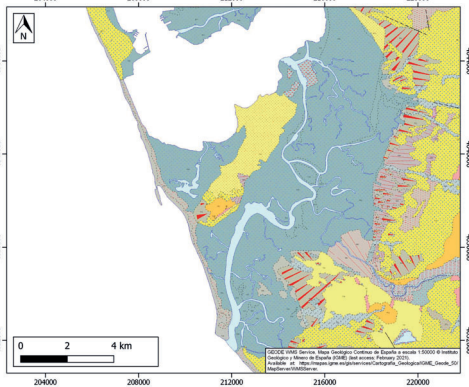
Available borehole data	Yes
Available seismic data	Yes



MAIN REFERENCES

Stratigraphy	Baena et al. (1987)
Regional Stratigraphy	Ramos et al. (2017)
Structure	Mancheño and Rodríguez-Estrella (1985)
Regional Structure	García de Domingo et al. (1987)
Gravimetry	Ayala et al. (2016)
Petrophysics/Paleomagnetism	nd

GEOLOGY (GEODE IGME)



IBERIAN
EVAPORITE
STRUCTURE
DATABASE