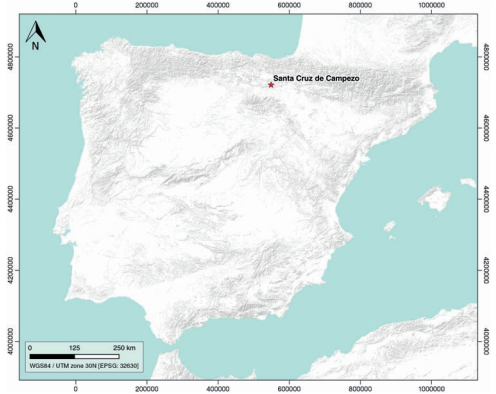


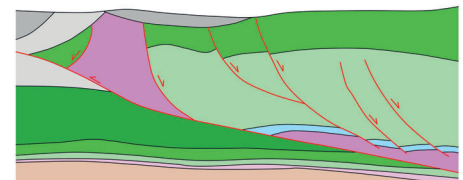
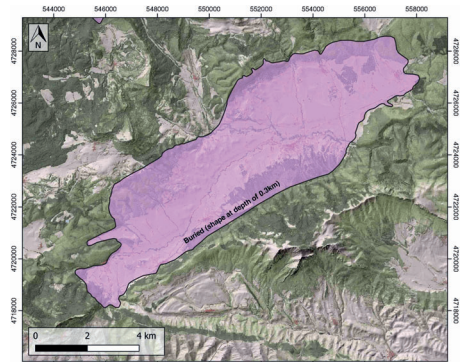
GENERAL INFORMATION

Structure type	Evaporite-detached thrust
Deformed/Undeformed	Deformed
Geological Setting	Basque-Cantabrian Basin, Navarra-Álava trough
Outcropping/buried	Buried
Evaporite unit/s name	Keuper Facies
Evaporite unit/s age	Carnian-Rhaetian (Upper Triassic)
Evaporite unit/s origin	Marine
Classif. (Hudec and Jackson, 2009)	Passive piercement
Classif. (Jackson and Talbot, 1986)	Salt stock
Other comments	-

LOCATION



SHAPE AND SUB-SURFACE STRUCTURE



STRATIGRAPHY AND STRUCTURE

Evaporite unit/s composition	Gypsum-Shale-Mudstone-Marlstone
Syn-kinematic unit/s	Upper Weald facies (sandstones) / Aptian-middle Albian (Urgonian Group: marlstones, limestones, packstones, breccias, rudistid limestones; Punta del Bakio Unit: turbidites, mudstones and grainstones) / Danian-Selandian (dolomites and limestones) / Thanetian-Ypresian (limestones and marls) / Lutetian-Bartonian / Early Priabonian
Post-evaporite and pre-kinematic unit/s	Jurassic (dolostones, marls and oolitic limestones)
Post-kinematic unit/s (or post-evaporite desposition when undeformed)	Oligocene-Lower Miocene ; Upper Miocene ; Quaternary
Age of evaporite flow or deformation (when deformed)	Lower Cretaceous, Paleocene-Eocene
Flow or deforming triggering mechanisms	NE-SW extensional faults
Halokinetic structures	Progressive unconformities / radial normal and thrust faults / thickness variations

SUB-SURFACE DATA AVAILABILITY

Available borehole data	Yes
Available seismic data	Yes

MAIN REFERENCES

Stratigraphy	Cámara (2017)
Regional Stratigraphy	Pedraza et al. (2017)
Structure	Cámara (2020)
Regional Structure	Cámara (2017)
Gravimetry	Pinto et al. (2005)
Petrophysics/Paleomagnetism	Llamas et al. (2017)

GEOLOGY (GEODE IGME)

