

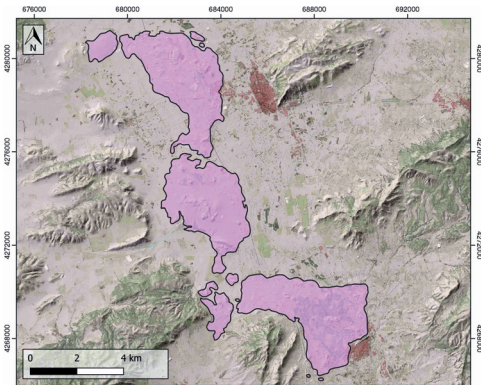
GENERAL INFORMATION

Structure type	Evaporite body
Deformed/Undeformed	Deformed
Geological Setting	Betic system, Pre-Betic cordillera
Outcropping/buried	Outcropping
Evaporite unit/s name	Keuper Facies
Evaporite unit/s age	Carnian-Rhaetian (Upper Triassic)
Evaporite unit/s origin	Marine
Classif. (Hudec and Jackson, 2009)	Passive piercement
Classif. (Jackson and Talbot, 1986)	Salt wall
Other comments	-

LOCATION



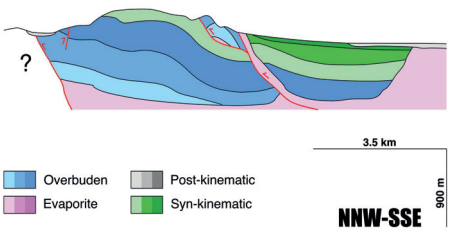
SHAPE AND SUB-SURFACE STRUCTURE



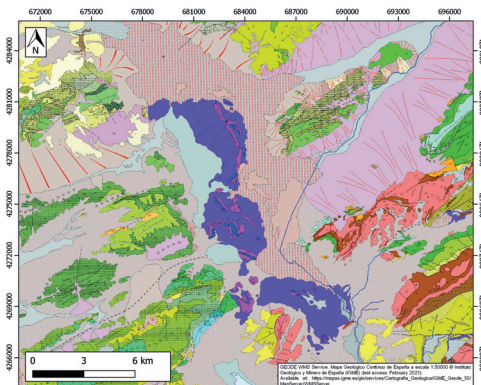
Evaporite unit/s composition	Gypsum-Shale-Anhydrite-Ophites
Post-evaporite and pre-kinematic unit/s	nd
Syn-kinematic unit/s	nd
Post-kinematic unit/s (or post-evaporite desposition when undeformed)	Quaternary (alluvial and colluvial detrital deposits)
Age of evaporite flow or deformation (when deformed)	Miocene to Pliocene, Upper Cretaceous to Oligocene
Flow or deforming triggering mechanisms	Regional extension (main stage?) and strike-slip faulting (reactivation late stage)
Halokinetic structures	nd

SUB-SURFACE DATA AVAILABILITY

Available borehole data	Yes
Available seismic data	Yes



GEOLOGY (GEODE IGME)



MAIN REFERENCES

Stratigraphy	Martín-Martín et al. (2020)
Regional Stratigraphy	Escosa et al. (2018)
Structure	Martín-Martín et al. (2020)
Regional Structure	del Olmo et al. (1986)
Gravimetry	Castaño and Carbó (1995)
Petrophysics/Paleomagnetism	nd



IBERIAN
EVAPORITE
STRUCTURE
DATABASE